



**Test Report**  
**IEC 60335-2-98**  
**Household and similar electrical appliances - Safety –**  
**Part 2-98: Particular requirements for humidifiers**

<b>Tested by (name + signature)..... :</b>	Tanac	
<b>Reviewed by (name + signature)..:</b>	Roger Zheng	
<b>Approved by (name + signature)..:</b>	Tim You	
<b>Date of issue .....</b>	2025-02-14	
<b>Testing Laboratory Name .....</b>	Dongguan Jun'an Testing & Certification Co., Ltd.	
<b>Address .....</b>	Room 303, Building 1, No.316, Renzhou Road, Shatian Town, Dongguan City, Guangdong Province, China.	
<b>Testing location .....</b>	JAT	
<b>Address .....</b>	Same as above.	
<b>Applicant's Name .....</b>	OLang Technology Co.,Ltd.	
<b>Address .....</b>	No.25 Dongpo street,Dongping Area Huizhou Guangdong China	
<b>Standard.....</b>	IEC 60335-1:2020 IEC 60335-2-98:2023 EN 60335-1:2023 EN 60335-2-98:2003/A2:2008	
<b>Test procedure .....</b>	CE test report	
<b>Procedure deviation .....</b>	N/A.	
<b>Test item description .....</b>	hydrogen inhalation machine	
<b>Manufacturer.....</b>	OLang Technology Co.,Ltd.	
<b>Address .....</b>	No.25 Dongpo street,Dongping Area Huizhou Guangdong China	
<b>Trademark .....</b>	N/A	
<b>Model and/or type reference .....</b>	OL-225, OL-300, OL-450, OL-600, OL-900, OL-1200, OL-1500, OL-2000, OL-3000, OL-900D	
<b>Rating(s) .....</b>	110-240Vac 50/60Hz 150W	



**Test item particulars :**

Equipment mobility ..... : Move equipment  
Operating condition..... : Continuous  
Tested for IT power systems ..... : N/A.  
IT testing, phase-phase voltage (V) ..... : 110-240V  
Class of equipment ..... : Class I  
Protection against ingress of water ..... : N/A.  
Rated max. ambient temperature..... : N/A.

**Test case verdicts:**

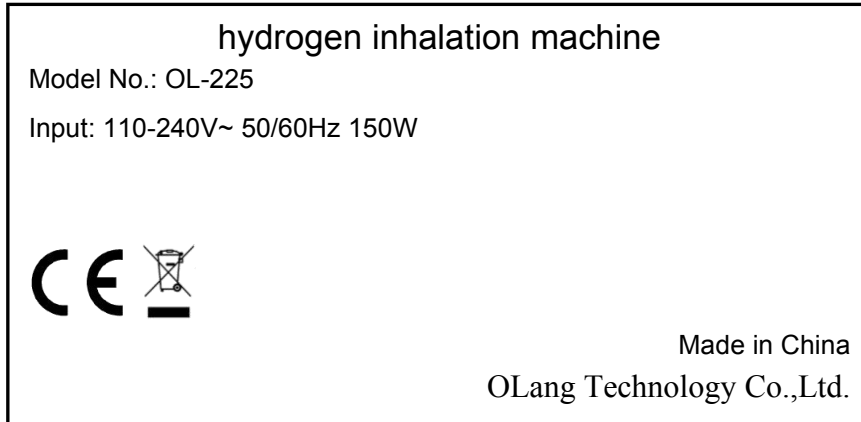
Test case does not apply to the test object..... : N(/A.)  
Test item does meet the requirement..... : P(ass)  
Test item does not meet the requirement..... : F(ail)

**Testing:**

Date of receipt of test item..... : 2025-02-05  
Date(s) of performance of test ..... : 2025-02-05 to 2025-02-06



**Label:**



**Note: Due to similarity of the rating labels, only above label is listed**

<p><b>General remarks:</b></p> <p>"(see remark #)" refers to a remark appended to the report.</p> <p>"(see appended table)" refers to a table appended to the report.</p> <p>Throughout this report a comma is used as the decimal separator.</p> <p>The test results presented in this report relate only to the object tested.</p> <p>This report shall not be reproduced except in full without the written approval of the testing laboratory.</p> <p>Unless otherwise specified, test are made under normal conditions at an ambient temperature within the range of 15°C to 35°C, RH45% to 75% and an air pressure of 860mbar of 1060mbar.</p>	<p>Attachment with:</p> <ol style="list-style-type: none"><li>1) EUROPEAN GROUP DIFFERENCES AND NATIONAL DIFFERENCES</li><li>2) Photo documentation</li></ol>
--	---



IEC 60335-2-98			
Clause	Requirement - Test	Result - Remark	Verdict
5	GENERAL CONDITIONS FOR THE TESTS		--
	Tests performed according to clause 5, e.g. nature of supply, sequence of testing, etc.		P
5.17	Appliances powered by rechargeable batteries that are recharged in the appliance are tested in accordance with Annex B.		N/A
	Battery-operated appliances powered by batteries that are non-rechargeable or not recharged in the appliance are tested in accordance with Annex S.		N/A
6	CLASSIFICATION		--
6.1	Protection against electric shock (IEC 60335-2-98):		--
	- Hairdryers, curling irons, curling combs, facial saunas and other steam-producing or spray producing appliances be class II or III (IEC 60335-2-98).....:	class I	N/A
	However, fixed hairdryers intended to be permanently connected to fixed wiring, helmet-type hairdryers for hairdressers and steam-producing or spray-producing appliances for hairdressers be class I (IEC 60335-2-98).....:		P
	- Other appliances be class I, II or III (IEC 60335-2-98).....:		N/A
6.2	Protection against harmful ingress of water		N/A
	Hand dryers be at least IPX1 (IEC 60335-2-98)		N/A
	Curling rollers of permanent-wave appliances be at least IPX4 (IEC 60335-2-98)		N/A
7	MARKING AND INSTRUCTIONS		--
7.1	Rated voltage or voltage range (V).....:	See label	P
	Symbol for nature of supply, or.....:	See label	P
	Rated frequency (Hz).....:	See label	P
	Rated power input (W), or.....:	See label	P
	Rated current (A) .....		N/A
	Manufacturer's or responsible vendor's name, trademark or identification mark.....:	See label	P
	Model or type reference.....:	See label	P
	Symbol IEC 60417-5172, for class II appliances		N/A
	IP number, other than IPX0.....:		N/A
	Symbol IEC 60417-5018, for Class II appliances and class III appliances incorporating a functional earth.		N/A
	Symbol IEC 60417-5180, for class III appliances, unless		N/A
	the appliance is operated by batteries only		N/A



IEC 60335-2-98			
Clause	Requirement - Test	Result - Remark	Verdict
	Symbol IEC 60417-5036, for the enclosure of electrically-operated water valves in external hose-sets for connection of an appliance to the water mains, if the working voltage exceeds extra-low voltage		N/A
	Portable hairdryers, curling irons and similar appliances marked with symbol IEC 60417-5582 (2002-10) combined with prohibition sign of ISO 3864-1, except for specified colours (IEC 60335-2-98/A1),		P
	or with substance of following: WARNING: Do not use this appliance near water. (IEC 60335-2-98)		N/A
7.2	Warning for stationary appliances for multiple supply		N/A
	Warning placed in vicinity of terminal cover		N/A
7.3	Range of rated values marked with the lower and upper limits separated by a hyphen	110-240V	P
	Different rated values marked with the values separated by an oblique stroke		N/A
7.4	Appliances adjustable for different rated voltages or rated frequencies, the voltage or the frequency setting is clearly discernible.		N/A
	Requirement met if frequent changes are not required and the rated voltage or rated frequency to which the appliance is to be adjusted is determined from a wiring diagram.		N/A
7.5	Appliances with more than one rated voltage or one or more rated voltage ranges, marked with rated input or rated current for each rated voltage or range, unless		N/A
	the power input is related to the arithmetic mean value of the rated voltage range		P
	Relation between marking for upper and lower limits of rated power input or rated current and voltage is clear		P
7.6	Correct symbols used		P
	Symbol for nature of supply placed next to rated voltage		P
	Symbol for class II appliances placed unlikely to be confused with other marking		P
	Units of physical quantities and their symbols according to international standardized system		P
	Symbol IEC 60417-5582 (2002-10), Suitable for use in a bath or shower (IEC 60335-2-98/A1)		N/A
	Replace [symbol ISO 7000-0434 (2004-01)] by [symbol ISO 7000-0434A (2004-01)].		N/A



IEC 60335-2-98			
Clause	Requirement - Test	Result - Remark	Verdict
7.7	Connection diagram fixed to appliances to be connected to more than two supply conductors and appliances for multiple supply, unless		N/A
	correct mode of connection is obvious		N/A
7.8	Except for type Z attachment, terminals for connection to the supply mains indicated as follows:		--
	- marking of terminals exclusively for the neutral conductor (letter N)		N/A
	- marking of protective earthing terminals (symbol IEC 60417-5019)		N/A
	- marking not placed on removable parts		N/A
	- marking of functional earthing terminals (symbol IEC 60417-5018).		N/A
7.9	Marking or placing of switches which may cause a hazard		N/A
7.10	Indications of switches on stationary appliances and controls on all appliances by use of figures, letters or other visual means..... :		P
	This applies also to switches which are part of a control		P
	If figures are used, the off position indicated by the figure 0		P
	The figure 0 indicates only OFF position, unless no confusion with the OFF position		N/A
7.11	Indication for direction of adjustment of controls		P
7.12	Instructions for safe use provided		P
	Details concerning precautions during user maintenance		P
	Instructions for portable hairdryers include substance of following (IEC 60335-2-98):		--
	- when the hairdryer is used in a bathroom, unplug it after use since the proximity of water presents a hazard even when the hairdryer is switched off (IEC 60335-2-98);		P
	- for additional protection, the installation of a residual current device (RCD) having a rated residual operating current not exceeding 30 mA is advisable in the electrical circuit supplying the bathroom. Ask your installer for advice. (IEC 60335-2-98)		P
	Instructions for facial saunas state that after use the appliance should be cleaned to avoid the accumulation of grease and other residues. (IEC 60335-2-98)		P



<b>IEC 60335-2-98</b>			
Clause	Requirement - Test	Result - Remark	Verdict
	Symbol EN 60417-5582 (2002-10) used, together with prohibition sign, meaning be explained. Instructions also state substance of following: WARNING: Do not use this appliance near bathtubs, showers, basins or other vessels containing water. (IEC 60335-2-98/A1)		P
	The instructions state that:		--
	- the appliance is not to be used by persons (including children) with reduced physical, sensory or mental capabilities, or lack of experience and knowledge, unless they have been given supervision or instruction		P
	- children being supervised not to play with the appliance		P
	For a part of class III construction supplied from a detachable power supply unit, the instructions state that the appliance is only to be used with the unit provided		P
	Instructions for class III appliances state that it must only be supplied at SELV, unless		P
	it is a battery-operated appliance, the battery being charged outside the appliance		N/A
	For appliances for altitudes exceeding 2000 m, the maximum altitude is stated.		N/A
	The instructions for appliances incorporating a functional earth shall state that the appliance incorporates an earth connection for functional purposes only.		N/A
7.12.1	Sufficient details for installation supplied		N/A
	Installation instructions for fixed hairdryers intended for use in bathrooms include substance of the following: This hairdryer must be fixed out of reach of a person taking a bath or shower. (IEC 60335-2-98)		N/A
	Hand-held part of hairdryer incorporates electrical components, instructions state that the appliance must be fixed so that the hand-held part, when fully extended, is out of reach of a person taking a bath or shower (IEC 60335-2-98)		N/A
	For an appliance intended to be permanently connected to the water mains and not connected by a hose-set, this is stated		N/A
	If different rated voltages or different rated frequencies are marked, the instructions state what action to be taken to adjust the appliance.		N/A



<b>IEC 60335-2-98</b>			
Clause	Requirement - Test	Result - Remark	Verdict
7.12.2	Stationary appliances not fitted with means for disconnection from the supply mains having a contact separation in all poles that provide full disconnection under overvoltage category III, the instructions state that means for disconnection must be incorporated in the fixed wiring in accordance with the wiring rules	Installation manual stated: Fitted with accessible plug or incorporating a switch in fixed wiring	P
7.12.3	Insulation of the fixed wiring in contact with parts exceeding 50 K during clause 11; instructions state that the fixed wiring must be protected		N/A
7.12.4	Instructions for built-in appliances:		--
	- dimensions of space		N/A
	- dimensions and position of supporting and fixing		N/A
	- minimum distances between parts and surrounding structure		N/A
	- minimum dimensions of ventilating openings and arrangement		N/A
	- connection to supply mains and interconnection of separate components		N/A
	- allow disconnection of the appliance after installation, by accessible plug or a switch in the fixed wiring, unless		N/A
	a switch complying with 24.3		N/A
7.12.5	Replacement cord instructions, type X attachment with a specially prepared cord		N/A
	Replacement cord instructions, type Y attachment		N/A
	Replacement cord instructions, type Z attachment	Installation manual stated: The power cord cannot be replaced. If the cord is damaged, the appliance should be discarded	P
7.12.6	Caution in the instructions for appliances incorporating a non-self-resetting thermal cut-out that is reset by disconnection of the supply mains, if this cut-out is required to comply with the standard		N/A
7.12.7	Instructions for fixed appliances stating how the appliance is to be fixed		N/A
7.12.8	Instructions for appliances connected to the water mains:		--
	- max. inlet water pressure (Pa)..... :		N/A
	- min. inlet water pressure, if necessary (Pa)..... :		N/A
	Instructions concerning new and old hose-sets for appliances connected to the water mains by detachable hose-sets		N/A
7.13	Instructions and other texts in an official language		P
7.14	Marking clearly legible and durable, rubbing test as specified		P





IEC 60335-2-98			
Clause	Requirement - Test	Result - Remark	Verdict
	Diameter of circle superimposed on symbol EN 60417-5582 (2002-10) be at least 10 mm (IEC 60335-2-98/A1)		P
7.15	Markings on a main part		P
	Marking clearly discernible from the outside, if necessary after removal of a cover		P
	For portable appliances, cover can be removed or opened without a tool		P
	For stationary appliances, name, trademark or identification mark and model or type reference visible after installation		N/A
	For fixed appliances, name, trademark or identification mark and model or type reference visible after installation according to the instructions		N/A
	Indications for switches and controls placed on or near the components. Marking not on parts which can be positioned or repositioned in such a way that the marking is misleading		P
	The symbol EN 60417-5018 placed next to the Symbol EN 60417-5172 or EN 60417-5180.		N/A
7.16	Marking of a possible replaceable thermal link or fuse link clearly visible with regard to replacing the link		N/A
8	PROTECTION AGAINST ACCESS TO LIVE PARTS		--
8.1	Adequate protection against accidental contact with live parts		P
8.1.1	Requirement applies for all positions, detachable parts removed		P
	Lamps behind a detachable cover not removed, if conditions met		N/A
	Insertion or removal of lamps, protection against contact with live parts of the lamp cap		N/A
	Use of test probe B of J 61032, with a force not exceeding 1 N: no contact with live parts		P
8.1.2	Use of test probe 13 of J 61032, with a force not exceeding 1 N, through openings in class 0 appliances and class II appliances/constructions: no contact with live parts		P
	Test probe 13 also applied through openings in earthed metal enclosures having a non-conductive coating: no contact with live parts		N/A
8.1.4	Accessible part not considered live if:		--
	- safety extra-low a.c. voltage: peak value not exceeding 42;4 V		N/A
	- safety extra-low d.c. voltage: not exceeding 42;4 V		P
	- or separated from live parts by protective impedance		P



IEC 60335-2-98			
Clause	Requirement - Test	Result - Remark	Verdict
	If protective impedance: d.c. current not exceeding 2 mA, and		N/A
	a.c. peak value not exceeding 0;7 mA		N/A
	- for peak values over 42;4 V up to and including 450 V, capacitance not exceeding 0,1 μF		N/A
	- for peak values over 450 V up to and including 15 kV, discharge not exceeding 45 μC		N/A
	- for peak values over 15 kV, the energy in the discharge not exceeding 350 mJ		N/A
8.1.5	Live parts protected at least by basic insulation before installation or assembly:		--
	- built-in appliances		N/A
	- fixed appliances		N/A
	- appliances delivered in separate units		N/A
8.2	Class II appliances and constructions constructed so that there is adequate protection against accidental contact with basic insulation and metal parts separated from live parts by basic insulation only		P
	Only possible to touch parts separated from live parts by double or reinforced insulation		N/A
10	POWER INPUT AND CURRENT		--
10.1	Power input at normal operating temperature, rated voltage and normal operation not deviating from rated power input by more than shown in table 1. :	(see appended table)	P
	Test carried out at upper and lower limits of the ranges for appliances with one or more rated voltage ranges, unless		P
	If the power input varies throughout the operating cycle and the maximum value of the power input exceeds, by a factor greater than two, the arithmetic mean value of the power input occurring during a representative period, the power input is the maximum value that is exceeded for more than 10 % of the representative period.		N/A
	Representative period for appliances incorporating PTC heating elements is 30 min. (IEC 60335-2-98/A2)		P
10.2	Current at normal operating temperature, rated voltage and normal operation not deviating from rated current by more than shown in table 2.....:		N/A
	Test carried out at upper and lower limits of the ranges for appliances with one or more rated voltage ranges, unless		N/A



IEC 60335-2-98			
Clause	Requirement - Test	Result - Remark	Verdict
	If the current varies throughout the operating cycle and the maximum value of the current exceeds, by a factor greater than two, the arithmetic mean value of the current occurring during a representative period, the current is the maximum value that is exceeded for more than 10 % of the representative period.		N/A
	Representative period for appliances incorporating PTC heating elements is 30 min. (IEC 60335-2-98/A2)		N/A
11	HEATING		--
11.1	No excessive temperatures in normal use		P
	For appliances incorporating swivel connection, compliance also checked by test of clause 11.101 (IEC 60335-2-98)		P
11.2	The appliance is held, placed or fixed in position as described.....:	Operated with its major axis horizontal	P
	Appliances intended to be used on a stand or attached to a support placed to give most unfavourable results (IEC 60335-2-98)		N/A
	Hand-held appliances with an integral rest are also tested when placed on their rest away from the walls of the test corner. (IEC 60335-2-98/A2)		N/A
11.3	Temperature rises, other than of windings, determined by thermocouples		P
	Temperature rises of windings determined by resistance method, unless		N/A
	the windings are non- uniform or it is difficult to make the necessary connections		N/A
11.4	Heating appliances operated under normal operation at 1,15 times rated power input (W) .....		P
	Temperature rise limits exceeded in appliances incorporating motors, transformers or electronic circuits, and power input is lower than rated power input, test repeated with appliance supplied at 1,06 times rated voltage (IEC 60335-2-98)		N/A
11.5	Motor- operated appliances operated under normal operation at most unfavourable voltage between 0,94 and 1,06 times rated voltage (V).....:		N/A
11.6	Combined appliances operated as heating appliances (IEC 60335-2-98)		N/A
11.7	Appliances without timer operated (IEC 60335-2-98):		--
	- for 30 min, for hand-held appliances (IEC 60335-2-98);		P
	- in cycles of 30 s on and 5 s off until steady conditions established, for hand dryers that automatically controlled by presence of hands (IEC 60335-2-98);		N/A



IEC 60335-2-98			
Clause	Requirement - Test	Result - Remark	Verdict
	- until steady conditions established, for other appliances (IEC 60335-2-98).		N/A
	Appliances incorporating timer operated in cycles until steady conditions established. Each cycle consists of maximum operating time of timer (min) followed by rest period of 5 s (IEC 60335-2-98)..... :		N/A
11.8	Temperature rises monitored continuously and not exceeding the values in table 3 .....	(see appended table)	P
	If the temperature rise of a motor winding exceeds the value of table 3, or		N/A
	if there is doubt with regard to classification of insulation,		N/A
	tests of annex C are carried out		N/A
	Sealing compound does not flow out		N/A
	Protective devices do not operate, except		P
	components in protective electronic circuits tested for the number of cycles specified in 24.1.4		N/A
	Temperature rise limits of motors, transformers and components of electronic circuits, including parts directly influenced by them, be exceeded when appliance operated at 1,15 times rated power input (IEC 60335-2-98)		N/A
	Temperature rise of handles of curling irons heated by heater for detachable curlers incorporating a timer determined at end of first cycle (IEC 60335-2-98)		N/A
11.101	Appliances incorporating a swivel connection positioned with their major axis horizontal, supply cord hanging vertically. Pull force of 1 N applied to supply cord (IEC 60335-2-98)		P
	Appliance supplied at rated voltage, current being 1,25 times rated current (IEC 60335-2-98)		P
	Appliance rotated about its major axis at rate of approximately 50 rev/min, direction of rotation being reversed every 20 rev. Test carried out for 1500 rev (IEC 60335-2-98)		P
	Temperature rise of sliding contacts not exceed 65 K (IEC 60335-2-98)		P
13	LEAKAGE CURRENT AND ELECTRIC STRENGTH AT OPERATING TEMPERATURE		--
13.1	Leakage current not excessive and electric strength adequate		P
	Heating appliances operated at 1,15 times the rated power input (W)..... :		P
	Motor-operated appliances and combined appliances supplied at 1,06 times the rated voltage (V)..... :		N/A



<b>IEC 60335-2-98</b>			
Clause	Requirement - Test	Result - Remark	Verdict
	Protective impedance and radio interference filters disconnected before carrying out the tests		N/A
13.2	For class 0, class II, class II constructions and class III appliances, leakage current measured by means of the circuit described in figure 4 of EN 60990	class I	N/A
	For class 0I appliances and class I appliances, C may be replaced by a low impedance ammeter responding to the rated frequency of the appliance.	class I	P
	Leakage current measurements..... :	(see appended table)	P
13.3	The appliance is disconnected from the supply		P
	Electric strength tests according to table 4..... :	(see appended table)	P
	No breakdown during the tests		P
14	<b>TRANSIENT OVERVOLTAGES</b>		--
	Appliances withstand the transient over-voltages to which they may be subjected		N/A
	Clearances having a value less than specified in table 16 subjected to an impulse voltage test, the test voltage specified in table 6..... :	(see appended table)	N/A
	No flashover during the test, unless		N/A
	of functional insulation if the appliance complies with clause 19 with the clearance short-circuited		N/A
15	<b>MOISTURE RESISTANCE</b>		--
15.1	Enclosure provides the degree of moisture protection according to classification of the appliance		N/A
	Compliance checked as specified in 15.1.1, taking into account 15.1.2, followed by the electric strength test of 16.3		N/A
	No trace of water on insulation which can result in a reduction of clearances or creepage distances below values specified in clause 29		N/A
15.1.1	Appliances, other than IPX0, subjected to tests as specified in IEC 60529..... :		N/A
	Water valves containing live parts in external hoses for connection of an appliance to the water mains tested as specified for IPX7 appliances		N/A
15.1.2	Hand-held appliance turned continuously through the most unfavourable positions during the test		N/A
	Built-in appliances installed according to the instructions		N/A
	Appliances placed or used on the floor or table placed on a horizontal unperforated support		N/A
	Appliances normally fixed to a wall and appliances with pins for insertion into socket-outlets are mounted on a wooden board		N/A



<b>IEC 60335-2-98</b>			
Clause	Requirement - Test	Result - Remark	Verdict
	For IPX3 appliances, the base of wall mounted appliances is placed at the same level as the pivot axis of the oscillating tube		N/A
	For IPX4 appliances, the horizontal centre line of the appliance is aligned with the pivot axis of the oscillating tube, and		N/A
	for appliances normally used on the floor or table, the movement is limited to two times 90° for a period of 5 min, the support being placed at the level of the pivot axis of the oscillating tube		N/A
	Wall- mounted appliances, take into account the distance to the floor stated in the instructions		N/A
	Appliances normally fixed to a ceiling are mounted underneath a horizontal unperforated support, the pivot axis of the oscillating tube located at the level of the underside of the support, and		N/A
	for IPX4 appliances, the movement of the tube is limited to two times 90° from the vertical for a period of 5 min		N/A
	Appliances with type X attachment fitted with a flexible cord as described		N/A
	Detachable parts subjected to the relevant treatment with the main part		N/A
	However, if a part has to be removed for user maintenance and a tool is needed, this part is not removed		N/A
15.2	Spillage of liquid does not affect the electrical insulation		N/A
	Appliances with type X attachment fitted with a flexible cord as described		N/A
	Appliances incorporating an appliance inlet tested with or without an connector, whichever is most unfavourable		N/A
	Detachable parts are removed		N/A
	Overfilling test with additional amount of water, over a period of 1 min (l)..... :		N/A
	The appliance withstands the electric strength test of 16.3		N/A
	No trace of water on insulation that can result in a reduction of clearances or creepage distances below values specified in clause 29		N/A
15.3	Appliances proof against humid conditions		P
	Checked by test Cab: Damp heat steady state in EN 60068- 2- 78		P
	Detachable parts removed and subjected, if necessary, to the humidity test with the main part		N/A
	Humidity test for 48 h in a humidity cabinet		P



<b>IEC 60335-2-98</b>			
Clause	Requirement - Test	Result - Remark	Verdict
	Reassembly of those parts that may have been removed		N/A
	The appliance withstands the tests of clause 16		P
16	<b>LEAKAGE CURRENT AND ELECTRIC STRENGTH</b>		--
16.1	Leakage current not excessive and electric strength adequate		P
	Protective impedance disconnected from live parts before carrying out the tests		P
	Tests carried out at room temperature and not connected to the supply		P
16.2	Single-phase appliances: test voltage 1,06 times rated voltage (V)..... :	254.4	P
	Three-phase appliances: test voltage 1,06 times rated voltage divided by $\sqrt{3}$ (V)..... :		N/A
	Leakage current measurements..... :		P
	Limit values doubled if:		--
	- all controls have an off position in all poles, or		N/A
	- the appliance has no control other than a thermal cut-out, or		N/A
	- all thermostats, temperature limiters and energy regulators do not have an off position, or		N/A
	- the appliance has radio interference filters		N/A
	With the radio interference filters disconnected, the leakage current do not exceed limits specified..... :	(see appended table)	N/A
16.3	Electric strength tests according to table 7..... :	(see appended table)	P
	Test voltage applied between the supply cord and inlet bushing and cord guard and cord anchorage as specified..... :	(see appended table)	P
	No breakdown during the tests		P
17	<b>OVERLOAD PROTECTION OF TRANSFORMERS AND ASSOCIATED CIRCUITS</b>		--
	No excessive temperatures in transformer or associated circuits in event of short-circuits likely to occur in normal use..... :	(see appended table)	N/A
	Appliance supplied with 1,06 or 0,94 times rated voltage under the most unfavourable short-circuit or overload likely to occur in normal use (V)..... :		N/A
	Basic insulation is not short-circuited		N/A
	Temperature rise of insulation of the conductors of safety extra-low voltage circuits not exceeding the relevant value specified in table 3 by more than 15 K		N/A
	Temperature of the winding not exceeding the value specified in table 8		N/A
	However, limits do not apply to fail-safe transformers complying with sub-clause 15.5 of IEC 61558- 1		N/A



IEC 60335-2-98			
Clause	Requirement - Test	Result - Remark	Verdict
19	ABNORMAL OPERATION		--
19.1	The risk of fire, mechanical damage or electric shock under abnormal or careless operation obviated		P
	Electronic circuits so designed and applied that a fault will not render the appliance unsafe .....	(see appended table)	P
	Appliances incorporating heating elements subjected to the tests of 19.2 and 19.3, and		P
	if the appliance also has a control that limit the temperature during clause 11 it is subjected to the test of 19.4, and		P
	if applicable, to the test of 19.5		N/A
	Appliances incorporating PTC heating elements are also subjected to the test of 19.6		N/A
	Appliances incorporating motors subjected to the tests of 19.7 to 19.10, as applicable		N/A
	Appliances incorporating electronic circuits subjected to the tests of 19.11 and 19.12, as applicable		P
	Appliances incorporating contactors or relays subjected to the test of 19.14, being carried out before the tests of 19.11		N/A
	Appliances incorporating voltage selector switches subjected to the test of 19.15		N/A
	Unless otherwise specified, the tests are continued until a non- self-resetting thermal cut-out operates, or		P
	until steady conditions are established		P
	If a heating element or intentionally weak part becomes open-circuited, the relevant test is repeated on a second sample		N/A
	Hairdryers also subjected to tests of clause 19.101 and 19.102 (IEC 60335-2-98)		N/A
19.2	Test of appliances with heating elements with restricted heat dissipation; test voltage (V), power input of 0,85 times rated power input (W).....:		N/A
	Restricted heat dissipation is obtained as follows (IEC 60335-2-98):		--
	- motors disconnected (IEC 60335-2-98);		N/A
	- hand-held hairdryers placed on floor of test corner in any stable position likely to occur (IEC 60335-2-98);		N/A
	- appliances intended to be filled with water operated empty (IEC 60335-2-98).		N/A
	- hand-held appliances without an integral rest are placed on the floor of the test corner in any stable position likely to occur (IEC 60335-2-98/A2).		N/A





<b>IEC 60335-2-98</b>			
Clause	Requirement - Test	Result - Remark	Verdict
	Hairdryers with flexible hood attachment also tested with motor operating, airflow through hose being restricted to give most unfavourable result (IEC 60335-2-98)		N/A
	Heaters for detachable curlers placed on piece of low- density glass- fibre insulation having coefficient of thermal insulation of approximately 2,5 m <sup>2</sup> K/W (IEC 60335-2-98)		N/A
19.3	Test of 19.2 repeated; test voltage (V), power input of 1,24 times rated power input (W)..... :		N/A
19.4	Test conditions as in clause 11, any control limiting the temperature during tests of clause 11 short-circuited		N/A
19.5	Test of 19.4 repeated on class 0I and I appliances with tubular sheathed or embedded heating elements. No short-circuiting, but one end of the element connected to the sheath		N/A
	The test repeated with reversed polarity and the other end of the heating element connected to the sheath		N/A
	The test is not carried out on appliances intended to be permanently connected to fixed wiring and on appliances where an all- pole disconnection occurs during the test of 19.4		N/A
19.6	Appliances with PTC heating elements tested at rated voltage, establishing steady conditions		N/A
	The working voltage of the PTC heating element is increased by 5 % and the appliance is operated until steady conditions are re- established. The voltage is then increased in similar steps until 1,5 times working voltage or until the PTC heating element ruptures (V)..... :		N/A
19.7	Stalling test by locking the rotor if the locked rotor torque is smaller than the full load torque, or		N/A
	locking moving parts of other appliances		N/A
	Locked rotor, capacitors open- circuited one at a time		N/A
	Test repeated with capacitors short- circuited one at a time, unless		N/A
	capacitor is of class P2 of IEC 60252- 1		N/A
	Appliances with timer or programmer supplied with rated voltage for each of the tests, for a period equal to the maximum period allowed..... :		p
	If the timer or programmer is an electronic type that operates to ensure compliance with the test before the maximum period under the conditions of Clause 11 is reached, it is considered to be a protective electronic circuit as well as a control that operates under the conditions of Clause 11.		N/A
	Test carried out for 5 min except for (IEC 60335-2-98):		--



<b>IEC 60335-2-98</b>			
Clause	Requirement - Test	Result - Remark	Verdict
	- hand-held appliances (IEC 60335-2-98);		N/A
	- appliances have to be kept switched on by hand (IEC 60335-2-98);		N/A
	- appliances incorporating a timer (IEC 60335-2-98).		N/A
	Other appliances supplied with rated voltage for a period as specified..... :		N/A
	Winding temperatures not exceeding values specified in table 8..... :	(see appended table)	P
19.8	Multi-phase motors operated at rated voltage with one phase disconnected		N/A
19.10	Series motor operated at 1,3 times rated voltage for 1 min (V)..... :		N/A
	Test carried out with heating elements disconnected or switched off (IEC 60335-2-98)		N/A
	During the test, parts not being ejected from the appliance		N/A
19.11	Electronic circuits, compliance checked by evaluation of the fault conditions specified in 19.11.2 for all circuits or parts of circuits, unless		P
	they comply with the conditions specified in 19.11.1		P
	Appliances incorporating an electronic circuit that relies upon a programmable component to function correctly, subjected to the test of 19.11.4.8, unless		N/A
	restarting does not result in a hazard		P
	Appliances having a device with an off position obtained by electronic disconnection, or a device placing the appliance in a stand-by mode, subjected to the tests of 19.11.4		P
	If the safety of the appliance under any of the fault conditions depends on the operation of a miniature fuse-link complying with IEC 60127, the test of 19.12 is carried out		N/A
	During and after each test the following is checked:		--
	- the temperature of the windings do not exceed the values specified in table 8		N/A
	- the appliance complies with the conditions specified in 19.13		P
	- any current flowing through protective impedance not exceeding the limits specified in 8.1.4		P
	If a conductor of a printed board becomes open-circuited, the appliance is considered to have withstood the particular test, provided both of the following conditions are met:		--
	- the base material of the printed circuit board withstands the test of annex E		N/A



IEC 60335-2-98			
Clause	Requirement - Test	Result - Remark	Verdict
	- any loosened conductor does not reduce clearance or creepage distances between live parts and accessible metal parts below the values specified in clause 29		N/A
19.11.1	Fault conditions a) to g) in 19.11.2 are not applied to circuits or parts of circuits meeting both of the following conditions:		--
	- the electronic circuit is a low- power circuit, that is, the maximum power at low- power points does not exceed 15 W according to the tests specified		N/A
	- the protection against electric shock, fire hazard, mechanical hazard or dangerous malfunction of other parts of the appliance does not rely on the correct functioning of the electronic circuit		N/A
19.11.2	Fault conditions applied one at a time, the appliance operating under conditions specified in clause 11, but supplied at rated voltage, duration of the tests as specified:		--
	a) short circuit of functional insulation if clearances or creepage distances are less than the values specified in clause 29		P
	b) open circuit at the terminals of any component		P
	c) short circuit of capacitors, unless		P
	they comply with EN 60384- 14		P
	d) short circuit of any two terminals of an electronic component, other than integrated circuits		P
	This fault condition is not applied between the two circuits of an optocoupler		P
	e) failure of triacs in the diode mode		P
	f) failure of microprocessors and integrated circuits		P
	g) failure of an electronic power switching device		P
	Each low power circuit is short-circuited by connecting the low- power point to the pole of the supply source from which the measurements were made		N/A
19.11.3	If the appliance incorporates a protective electronic circuit which operates to ensure compliance with clause 19, the relevant test is repeated with a single fault simulated, as indicated in a) to g) of 19.11.2		N/A
19.11.4	Appliances having a device with an off position obtained by electronic disconnection, or		P
	a device that can be placed in the stand-by mode,		P
	subjected to the tests of 19.11.4.1 to 19.11.4.7, the device being set in the off position or in the stand-by mode		P
	Appliances incorporating a protective electronic circuit subjected to the tests of 19.11.4.1 to 19.11.4.7, the tests being carried out after the protective electronic circuit has operated, except that		N/A



IEC 60335-2-98			
Clause	Requirement - Test	Result - Remark	Verdict
	appliances operated for 30 s or 5 min during the test of 19.7 are not subjected to the tests for electromagnetic phenomena.		N/A
	Surge protective devices disconnected, unless		N/A
	They incorporate spark gaps		N/A
19.11.4.1	The appliance is subjected to electrostatic discharges in accordance with IEC 61000-4-2, test level 4		P
19.11.4.2	The appliance is subjected to radiated fields in accordance with IEC 61000-4-3, test level 3		P
19.11.4.3	The appliance is subjected to fast transient bursts in accordance with IEC 61000-4-4, test level 3 or 4 as specified		P
19.11.4.4	The power supply terminals of the appliance are subjected to voltage surges in accordance with IEC 61000-4-5, five positive impulses and five negative impulses being applied at the selected points. An open circuit test voltage of 2 kV is applicable for the line-to-line coupling mode, a generator having a source impedance of 2 Ω being used. An open circuit test voltage of 4 kV is applicable for the line-to-earth coupling mode, a generator having a source impedance of 12 Ω being used.		P
	Earthed heating elements in class I appliances disconnected		P
19.11.4.5	The appliance is subjected to injected currents in accordance with J 61000-4-6, test level 3		P
19.11.4.6	Appliances having a rated current not exceeding 16 A are subjected to the class 3 voltage dips and interruptions in accordance with IEC 61000-4-11		P
	Appliances having a rated current exceeding 16 A are subjected to the class 3 voltage dips and interruptions in accordance with IEC 61000-4-34		N/A
19.11.4.7	The appliance is subjected to mains signals in accordance with J 61000-4-13, test level class 2		P
19.11.4.8	The appliance is supplied at rated voltage and operated under normal operation. After 60 s the power supply is reduced to a level such that the appliance ceases to respond or parts controlled by the programmable component cease to operate		P
	The appliance continues to operate normally, or		P
	requires a manual operation to restart		P
19.12	If the safety of the appliance for any of the fault conditions specified in 19.11.2 depends on the operation of a miniature fuse-link complying with IEC 60127, the test is repeated, measuring the current flowing through the fuse-link; measured current (A); rated current of the fuse-link (A).....:		N/A



<b>IEC 60335-2-98</b>			
Clause	Requirement - Test	Result - Remark	Verdict
19.13	During the tests the appliance does not emit flames, molten metal, poisonous or ignitable gas in hazardous amounts		P
	Temperature rises not exceeding the values shown in table 9.....:	(see appended table)	P
	Compliance with clause 8 not impaired		P
	If the appliance can still be operated it complies with 20.2		P
	Insulation, other than of class III appliances or class III constructions that do not contain live parts, withstands the electric strength test of 16.3, the test voltage as specified in table 4:		--
	- basic insulation (V).....:		N/A
	- supplementary insulation (V).....:	1750	P
	- reinforced insulation (V).....:	3000	P
	After operation or interruption of a control, clearances and creepage distances across the functional insulation withstand the electric strength test of 16.3, the test voltage being twice the working voltage		P
	The appliance does not undergo a dangerous malfunction, and		N/A
	no failure of protective electronic circuits, if the appliance is still operable		P
	Appliances tested with an electronic switch in the off position, or in the stand-by mode:		--
	- do not become operational, or		N/A
	- if they become operational, do not result in a dangerous malfunction during or after the tests of 19.11.4		P
	If the appliance contains lids or doors that are controlled by one or more interlocks, one of the interlocks may be released provided that:		--
	- the lid or door does not move automatically to an open position when the interlock is released, and		N/A
	- the appliance does not start after the cycle in which the interlock was released		N/A
19.14	Appliances operated under the conditions of clause 11, any contactor or relay contact operating under the conditions of clause 11 being short-circuited		N/A
	For a relay or contactor with more than one contact, all contacts are short-circuited at the same time		N/A
	A relay or contactor operating only to ensure the appliance is energized for normal use is not short-circuited		N/A
	If more than one relay or contactor operates in clause 11, they are short-circuited in turn		N/A



<b>IEC 60335-2-98</b>			
Clause	Requirement - Test	Result - Remark	Verdict
19.15	For appliances with a mains voltage selector switch, the switch is set to the lowest rated voltage position and the highest value of rated voltage is applied		N/A
19.101	Hairdryers operated as specified in clause 11 until steady conditions established (IEC 60335-2-98/A1)		N/A
	Voltage at terminals of motor reduced until running speed of motor is just sufficient to prevent thermal cut-out from operating, power input to heating element being maintained at 1,15 times rated power input (IEC 60335-2-98/A1)		N/A
	Voltage is decreased at (IEC 60335-2-98/A1)		--
	- 1 V/min, for motors with working voltage not exceeding 30 V (IEC 60335-2-98/A1);		N/A
	- 5 V/min, for motors with working voltage exceeding 30 V (IEC 60335-2-98/A1).		N/A
	Appliance operated until steady conditions established (IEC 60335-2-98/A1)		N/A
19.102	Portable hair dryers operated under normal operation at 1,15 times rated power input (IEC 60335-2-98)		N/A
	Sheet of polyethylene approximately 200 mm x 200 mm and having thickness of 50 μm placed against air-inlet and moved in any direction in order to reduce airflow so that most unfavourable conditions established (IEC 60335-2-98)		N/A
	Test carried out for 30 min (IEC 60335-2-98)		N/A
	Test repeated with airflow directed horizontally (IEC 60335-2-98)		N/A
20	<b>STABILITY AND MECHANICAL HAZARDS</b>		--
20.1	Appliances having adequate stability		N/A
	Tilting test through an angle of 10°, appliance placed on an inclined plane/horizontal support, not connected to the supply mains; appliance does not overturn		N/A
	Tilting test repeated on appliances with heating elements, angle of inclination increased to 15°		N/A
	Possible heating test in overturned position; temperature rise does not exceed values shown in table 9		N/A
20.2	Moving parts adequately arranged or enclosed as to provide protection against personal injury		N/A
	Protective enclosures, guards and similar parts are non-detachable, and		N/A
	have adequate mechanical strength		N/A
	Enclosures that can be opened by overriding an interlock are considered to be detachable parts		N/A



IEC 60335-2-98			
Clause	Requirement - Test	Result - Remark	Verdict
	Self-resetting thermal cut-outs and overcurrent protective devices not causing a hazard by unexpected closure		N/A
	Not possible to touch dangerous moving parts with the test probe described		N/A
21	MECHANICAL STRENGTH		--
21.1	Appliance has adequate mechanical strength and is constructed as to withstand rough handling		P
	Checked by applying 3 blows to every point of the enclosure like to be weak, in accordance with test Ehb of J60068-2-75, spring hammer test, with an impact energy of 0,5 J		P
	The appliance shows no damage impairing compliance with this standard, and		P
	compliance with 8.1, 15.1 and clause 29 not impaired		P
	If doubt, supplementary or reinforced insulation subjected to the electric strength test of 16.3		N/A
	If necessary, repetition of groups of three blows on a new sample		N/A
	Hand-held appliances also subjected to test of clause 21.101 (IEC 60335-2-98/A1)		P
21.2	Accessible parts of solid insulation having strength to prevent penetration by sharp implements		P
	Test not applicable if the thickness of supplementary insulation is at least 1 mm and reinforced insulation at least 2 mm		P
	The insulation is tested as specified, and does withstand the electric strength test of 16.3		N/A
21.101	Appliance placed on horizontal surface positioned 700 mm above rigidly supported hardwood board and operated while supplied at rated voltage (IEC 60335-2-98)		P
	Pulled from surface by its supply cord and allowed to drop freely. Test carried out five times, appliance being placed on horizontal surface in different positions likely to occur (IEC 60335-2-98)		P
	Appliance not damaged to such an extent that compliance with this standard is impaired. In particular, requirements of clauses 8 and 29 be fulfilled (IEC 60335-2-98)		P
22	CONSTRUCTION		--
22.1	Appliance marked with the first numeral of the IP system, relevant requirements of IEC 60529 are fulfilled		N/A
22.2	Stationary appliance: means to ensure all-pole disconnection from the supply being provided:		--
	- a supply cord fitted with a plug, or		N/A



IEC 60335-2-98			
Clause	Requirement - Test	Result - Remark	Verdict
	- a switch complying with 24.3, or		N/A
	- a statement in the instruction sheet that a disconnection incorporated in the fixed wiring is to be provided, or		N/A
	- an appliance inlet		N/A
	Single-pole switches and single-pole protective devices for the disconnection of heating elements in single-phase, permanently connected class 01 and class I appliances, connected to the phase conductor		N/A
22.3	Appliance provided with pins: no undue strain on socket-outlets		N/A
	Applied torque not exceeding 0,25 Nm		N/A
	Pull force of 50 N to each pin after the appliance has been placed in the heating cabinet; when cooled to room temperature the pins are not displaced by more than 1mm		N/A
	Each pin subjected to a torque of 0,4 Nm; the pins are not rotating, unless		N/A
	rotating does not impair compliance with this standard		N/A
22.4	Appliance for heating liquids and appliance causing undue vibration not provided with pins for insertion into socket-outlets		N/A
22.5	No risk of electric shock when touching the pins of the plug, for appliances having a capacitor with rated capacitance equal to or greater than 0,1 $\mu$ F, the appliance being disconnected from the supply at the instant of voltage peak		P
	Voltage not exceeding 34 V (V)		N/A
	<i>If compliance relies on the operation of an <b>electronic circuit</b>, the electromagnetic phenomena tests of 19.11.4.3 and 19.11.4.4 are applied one at a time to the appliance. The discharge test is then repeated three times and for each test, the voltage shall not exceed 34 V.....:</i>		P
22.6	Electrical insulation not affected by condensing water or leaking liquid		N/A
	Electrical insulation of class II appliances not affected if a hose ruptures or seal leaks		N/A
	In case of doubt, test as described		N/A
22.7	Adequate safeguards against the risk of excessive pressure in appliances containing liquid or gases or having steam-producing devices		N/A
22.8	Electrical connections not subject to pulling during cleaning of compartments to which access can be gained without the aid of a tool, and that are likely to be cleaned in normal use		N/A





IEC 60335-2-98			
Clause	Requirement - Test	Result - Remark	Verdict
22.9	Insulation, internal wiring, windings, commutators and slip rings not exposed to oil, grease or similar substances, unless		P
	the substance has adequate insulating properties		N/A
22.10	Not possible to reset voltage-maintained non-self-resetting thermal cut-outs by the operation of an automatic switching device incorporated within the appliance, if:		N/A
	- a non-self-resetting thermal cut-out is required by the standard, and		N/A
	- a voltage maintained non-self-resetting thermal cut-out is used to meet it		N/A
	Non-self-resetting thermal motor protectors have a trip-free action, unless		N/A
	they are voltage maintained		N/A
	Reset buttons of non-self-resetting controls so located or protected that accidental resetting is unlikely		N/A
22.11	Reliable fixing of non-detachable parts that provide the necessary degree of protection against electric shock, moisture or contact with moving parts		P
	Obvious locked position of snap-in devices used for fixing such parts		P
	No deterioration of the fixing properties of snap-in devices used in parts that are likely to be removed during installation or servicing		N/A
	Tests as described		N/A
22.12	Handles, knobs etc. fixed in a reliable manner		P
	Fixing in wrong position of handles, knobs etc. indicating position of switches or similar components not possible		N/A
	Axial force 15 N applied to parts, the shape being so that an axial pull is unlikely to be applied		N/A
	Axial force 30 N applied to parts, the shape being so that an axial pull is likely to be applied		N/A
22.13	Unlikely that handles, when gripped as in normal use, make the operator's hand touch parts having a temperature rise exceeding the value specified for handles which are held for short periods only		P
22.14	No ragged or sharp edges creating a hazard for the user in normal use, or during user maintenance		P
	No exposed pointed ends of self-tapping screws or other fasteners, likely to be touched by the user in normal use or during user maintenance		P
22.15	Storage hooks and the like for flexible cords smooth and well rounded		N/A



IEC 60335-2-98			
Clause	Requirement - Test	Result - Remark	Verdict
22.16	Automatic cord reels cause no undue abrasion or damage to the sheath of the flexible cord, no breakage of conductors strands and no undue wear of contacts		N/A
	Cord reel tested with 6000 operations, as specified		N/A
	Electric strength test of 16.3, voltage of 1000 V applied		N/A
22.17	Spacers not removable from the outside by hand or by means of a screwdriver or a spanner		N/A
22.18	Current-carrying parts and other metal parts resistant to corrosion		P
22.19	Driving belts not relied upon to provide the required level of insulation, unless		N/A
	constructed to prevent inappropriate replacement		N/A
22.20	Direct contact between live parts and thermal insulation effectively prevented, unless		N/A
	material used is non-corrosive, non-hygroscopic and non-combustible		N/A
22.21	Wood, cotton, silk, ordinary paper and fibrous or hygroscopic material not used as insulation, unless		P
	impregnated		P
	This requirement does not apply to magnesium oxide and mineral ceramic fibres used for the electrical insulation of heating elements		N/A
22.22	Appliances not containing asbestos		P
22.23	Oils containing polychlorinated biphenyl (PCB) not used		N/A
22.24	Bare heating elements, except in class III appliances or class III constructions that do not contain live parts, adequately supported		P
	In case of rupture, the heating conductor is unlikely to come in contact with accessible metal parts		P
	Heating element also be unlikely to come into contact with skin or hair if it ruptures (IEC 60335-2-98)		P
22.25	Sagging heating conductors, except in class III appliances or class III constructions that do not contain live parts, cannot come into contact with accessible metal parts		P
22.26	For class III constructions the insulation between parts operating at safety extra-low voltage and other live parts complies with the requirements for double or reinforced insulation		P
22.27	Parts connected by protective impedance separated by double or reinforced insulation		P



<b>IEC 60335-2-98</b>			
Clause	Requirement - Test	Result - Remark	Verdict
22.28	Metal parts of class II appliances conductively connected to gas pipes or in contact with water, separated from live parts by double or reinforced insulation		N/A
22.29	Class II appliances permanently connected to fixed wiring so constructed that the required degree of access to live parts is maintained after installation		N/A
22.30	Parts serving as supplementary or reinforced insulation fixed so that they cannot be removed without being seriously damaged, or		P
	so constructed that they cannot be replaced in an incorrect position, and so that if they are omitted, the appliance is rendered inoperable or manifestly incomplete		P
22.31	Neither clearances nor creepage distances over supplementary and reinforced insulation reduced below values specified in clause 29 as a result of wear		P
	Neither clearances nor creepage distances between live parts and accessible parts reduced below values for supplementary insulation if wires, screws etc. become loose		P
22.32	Supplementary and reinforced insulation constructed or protected against pollution so that clearances or creepage distances are not reduced below the values in clause 29		P
	Supplementary insulation of natural or synthetic rubber resistant to ageing, or arranged and dimensioned so that creepage distances are not reduced below values specified in 29.2		N/A
	Ceramic material not tightly sintered, similar materials or beads alone not used as supplementary or reinforced insulation		N/A
	Ceramic and similar porous material in which heating conductors are embedded is considered to be basic insulation, not reinforced insulation		N/A
	Oxygen bomb test at 70 °C for 96 h and 16 h at room temperature		N/A
	In class II curling irons, supplementary insulation and reinforced insulation be resistant to aging (IEC 60335-2-98)		N/A
	Test samples kept in ventilated heating cabinet as specified: for 240 h, at temperature (°C) during tests of clause 19 or at 70 °C ±2 °C, whichever is higher (IEC 60335-2-98).....:		N/A
	After than at ambient temperature for at lest 16 h (IEC 60335-2-98)		N/A



IEC 60335-2-98			
Clause	Requirement - Test	Result - Remark	Verdict
	Samples show no cracks and withstand electric strength test of clause 16.3 for supplementary insulation (IEC 60335-2-98)		N/A
22.33	Conductive liquids that are or may become accessible in normal use and conductive liquids that are in contact with unearthed accessible metal parts are not in direct contact with live parts or unearthed metal parts that are separated from live parts by basic insulation only.		N/A
	Electrodes not used for heating liquids		N/A
	For class II constructions, conductive liquids that are or may become accessible in normal use and conductive liquids that are in contact with unearthed accessible metal parts, not in direct contact with basic or reinforced insulation, unless		N/A
	the reinforced insulation consists of at least 3 layers		N/A
	For class II constructions, conductive liquids which are in contact with live parts, not in direct contact with reinforced insulation, unless		N/A
	the reinforced insulation consists of at least 3 layers		N/A
	An air layer not used as basic or supplementary insulation in a double insulation system if likely to be bridged by leaking liquid		N/A
22.34	Shafts of operating knobs, handles, levers etc. not live, unless		P
	the shaft is not accessible when the part is removed		N/A
22.35	For other than class III constructions, handles, levers and knobs, held or actuated in normal use, not becoming live in the event of a failure of basic insulation		P
	Such parts being of metal, and their shafts or fixings are likely to become live in the event of a failure of basic insulation, are either adequately covered by insulation material or their accessible parts are separated from their shafts or fixings by supplementary insulation		N/A
	For <b>stationary appliances</b> and <b>cordless appliances</b> this requirement does not apply to handles, levers and knobs on stationary appliances, other than those of electrical components, provided they are reliably connected to an earthing terminal or earthing contact, or separated from live parts by earthed metal		N/A
	Insulating material covering metal handles, levers and knobs withstand the electric strength test of 16.3 for supplementary insulation		N/A



IEC 60335-2-98			
Clause	Requirement - Test	Result - Remark	Verdict
22.36	For appliances other than class III, handles continuously held in the hand in normal use so constructed that when gripped as in normal use, the operators hand is not likely to touch metal parts, unless		P
	they are separated from live parts by double or reinforced insulation		P
	Class I appliances, other than hand dryers and face dryers, metal parts could be in contact with skin or hair in normal use separated from live parts by double insulation or reinforced insulation and (IEC 60335-2-98)		N/A
	not be earthed (IEC 60335-2-98).		N/A
22.37	Capacitors in class II appliances not connected to accessible metal parts and their casings, if of metal, separated from accessible metal parts by supplementary insulation, unless		N/A
	the capacitors comply with 22.42		N/A
22.38	Capacitors not connected between the contacts of a thermal cut-out		N/A
22.39	Lamp holders used only for the connection of lamps		N/A
22.40	Motor-operated appliances and combined appliances intended to be moved while in operation, or having accessible moving parts, fitted with a switch to control the motor. The actuating member of the switch being easily visible and accessible		N/A
	Switch in off-position disconnect electronic circuits, unless compliance with clause 19 does not depend on operation of self-resetting thermal cut-out (IEC 60335-2-98)		N/A
	If the appliance cannot operate continuously, automatically or remotely without giving rise to a hazard, appliances for remote operation being fitted with a switch for stopping the operation. The actuating member of the switch being easily visible and accessible		N/A
22.41	No components, other than lamps, containing mercury		P
22.42	Protective impedance consisting of at least two separate components		N/A
	Values specified in 8.1.4 not exceeded if any one of the components are short-circuited or open-circuited		N/A
	Resistors checked by the test of 14.1 a) in IEC 60065		N/A
	Capacitors checked by the tests for class Y capacitors in IEC 60384-14		N/A
22.43	Appliances adjustable for different voltages, accidental changing of the setting of the voltage unlikely to occur		N/A



IEC 60335-2-98			
Clause	Requirement - Test	Result - Remark	Verdict
22.44	Appliances not having an enclosure that is shaped or decorated like a toy		P
22.45	When air is used as reinforced insulation, clearances not reduced below the values specified in 29.1.3 due to deformation as a result of an external force applied to the enclosure		P
22.46	For programmable protective electronic circuits used to ensure compliance with the standard, the software contains measures to control the fault/error conditions in table R.1		N/A
	Software that contains measures to control the fault/error conditions specified in table R.2 is to be specified in parts 2 for particular constructions or to address specific hazards		N/A
	These requirements are not applicable to software used for functional purpose or compliance with clause 11		N/A
22.47	Appliances connected to the water mains withstand the water pressure expected in normal use		N/A
	No leakage from any part, including any inlet water hose		N/A
22.48	Appliances connected to the water mains constructed to prevent backsiphonage of non-potable water		N/A
22.49	For remote operation, the duration of operation is to be set before the appliance can be started, unless		N/A
	the appliance switches off automatically or can operate continuously without hazard		N/A
22.50	Controls incorporated in the appliance take priority over controls actuated by remote operation		N/A
22.51	There is a control on the appliance manually adjusted to the setting for remote operation before the appliance can be operated in this mode		N/A
	There is a visual indication showing that the appliance is adjusted for remote operation		N/A
	These requirements not necessary on appliances that can operate as follows, without giving rise to a hazard:		--
	- continuously, or		N/A
	- automatically, or		N/A
	- remotely		N/A
22.52	Socket-outlets on appliances accessible to the user in accordance with the socket-outlet system used in the country in which the appliance is sold		P



IEC 60335-2-98			
Clause	Requirement - Test	Result - Remark	Verdict
22.53	Class II appliances and class III appliances that incorporate functionally earthed parts shall have at least double insulation or reinforced insulation between live parts and the functionally earthed parts.		P
22.54	Button cells and batteries designated R1 not accessible without the aid of a tool, unless the cover of their compartment can only be opened after at least two independent movements have been applied simultaneously.		N/A
22.101	Appliances with steam-producing or spray-producing devices constructed so that there is no spillage or unintentional burst of steam or water that likely to cause hazard (IEC 60335-2-98)		P
22.102	Curling rollers of permanent-wave appliances with integral heating elements supplied with safety extra-low voltage not exceeding 24 V (IEC 60335-2-98)		N/A
23	INTERNAL WIRING		--
23.1	Wireways smooth and free from sharp edges		P
	Wires protected against contact with burrs, cooling fins etc.		P
	Wire holes in metal well-rounded or provided with bushings		N/A
	Wiring effectively prevented from coming into contact with moving parts		N/A
23.2	Beads etc. on live wires cannot change their position, and are not resting on sharp edges		N/A
	Beads inside flexible metal conduits contained within an insulating sleeve		N/A
23.3	Electrical connections and internal conductors movable relatively to each other not exposed to undue stress		P
	Flexible metallic tubes not causing damage to insulation of conductors		N/A
	Open-coil springs not used		N/A
	Adequate insulating lining provided inside a coiled spring, the turns of which touch one another		N/A
	No damage after 10 000 flexings for conductors flexed during normal use, or		P
	100 flexings for conductors flexed during user maintenance		N/A
	Number of flexings for conductors that only flexed when appliance stored is 5000 (IEC 60335-2-98)		N/A
	Electric strength test of 16.3, 1000 V between live parts and accessible metal parts		P



IEC 60335-2-98			
Clause	Requirement - Test	Result - Remark	Verdict
	Not more than 10 % of the strands of any conductor broken, and		P
	not more than 30 % for wiring supplying circuits that consume no more than 15 W		N/A
23.4	Bare internal wiring sufficiently rigid and fixed		P
23.5	The insulation of internal wiring subjected to the supply mains voltage withstanding the electrical stress likely to occur in normal use		P
	Basic insulation electrically equivalent to the basic insulation of cords complying with IEC 60227 or IEC 60245, or		N/A
	no breakdown when a voltage of 2000 V is applied for 15 min between the conductor and metal foil wrapped around the insulation		P
23.6	Sleeving used as supplementary insulation on internal wiring retained in position by clamping at both ends, or		P
	be such that it can only be removed by breaking or cutting		P
23.7	The colour combination green/yellow only used for earthing conductors		N/A
23.8	Aluminium wires not used for internal wiring		P
23.9	Stranded conductors not consolidated by soldering where they are subjected to contact pressure, unless		N/A
	the contact pressure is provided by spring terminals		N/A
23.10	The insulation and sheath of internal wiring, incorporated in external hoses for the connection of an appliance to the water mains, at least equivalent to that of light polyvinyl chloride sheathed flexible cord (60227 IEC 52)		N/A
24	COMPONENTS		--
24.1	Components comply with safety requirements in relevant IEC standards		P
	List of components..... :	(see appended table)	P
	If components have not been tested and found to comply with relevant IEC standard for the number of cycles specified, they are tested in accordance with 24.1.1 to 24.1.9		P
	For components mentioned in 24.1.1 to 24.1.9 no additional tests specified in the relevant component standard are necessary other than those specified in 24.1.1 to 24.1.9		P
	Components not tested and found to comply with relevant IEC standard and components not marked or not used in accordance with its marking, tested under the conditions occurring in the appliance		P





IEC 60335-2-98			
Clause	Requirement - Test	Result - Remark	Verdict
	Lampholders and starterholders that have not being tested and found to comply with the relevant IEC standard, tested as a part of the appliance and additionally according to the gauging and interchangeability requirements of the relevant IEC standard		N/A
	No additional tests specified for nationally standardized plugs such as those detailed in IEC/TR 60083 or connectors complying with the standard sheets of IEC 60320-1 and IEC 60309		P
	Compliance with the IEC standard for the relevant component does not necessarily ensure compliance with the requirements of this standard.		P
	Motors are not required to comply with IEC 60034-1. They are tested as part of the appliance according to this standard.		N/A
	Relays shall be tested as part of the appliance according to this standard. They may be alternatively tested to IEC 60730-1, in which case they must also meet the additional requirements in IEC 60335-1.		N/A
	Unless otherwise specified, the requirements of Clause 29 of this standard apply between live parts of components and accessible parts of the appliance.		P
	Unless otherwise specified, components may comply with the requirements for clearances and creepage distances for functional insulation as specified in the relevant component standard.		P
	Unless otherwise specified, the requirements of 30.2 of this standard apply to parts of non-metallic material in components including parts of nonmetallic material supporting current-carrying connections inside components.		P
	Components that have not been previously tested and shown to comply with the IEC standard for the relevant component are tested according to the requirements of 30.2 of this standard.		P
	Power electronic converter circuits are not required to comply with IEC 62477-1. They are tested as part of the appliance according to this standard.		N/A
24.1.1	Capacitors likely to be permanently subjected to the supply voltage and used for radio interference suppression or for voltage dividing, complying with IEC 60384-14		P
	If the capacitors have to be tested, they are tested according to annex F		N/A
24.1.2	Safety isolating transformers complying with IEC 61558-2-6		N/A



<b>IEC 60335-2-98</b>			
Clause	Requirement - Test	Result - Remark	Verdict
	If they have to be tested, they are tested according to annex G		N/A
	<i>The relevant standard for transformers in associated switch mode power supplies is Annex BB of IEC 61558-2-16. Clause 26 of IEC 61558-1 and Annex H of IEC 61558-1 are not applicable.</i>		N/A
24.1.3	Switches complying with IEC 61058- 1, the number of cycles of operation being at least 10 000		P
	If they have to be tested, they are tested according to annex H		P
	If the switch operates a relay or contactor, the complete switching system is subjected to the test		N/A
	If the switch only operates a motor starting relay complying with IEC 60730-2- 10 with the number of cycles of a least 10 000 as specified, the complete switching system need not be tested		N/A
	Switches incorporated in hand dryers subjected to 50 000 cycles of operation (IEC 60335-2-98)		N/A
24.1.4	Automatic controls complying with IEC 60730- 1 with the relevant part 2. The number of cycles of operation being at least:		-
	- thermostats:..... 10 000		N/A
	- temperature limiters:..... 1 000		N/A
	- self-resetting thermal cut-outs:..... 300		N/A
	- voltage maintained non-self-resetting thermal cut-outs:..... 1 000		N/A
	- other non-self-resetting thermal cut-outs:..... 30		N/A
	- timers:.....3 000		N/A
	- energy regulators:..... 10 000		N/A
	The number of cycles for controls operating during clause 11 need not be declared, if the appliance meets the requirements of this standard when they are short-circuited		N/A
	Thermal motor protectors are tested in combination with their motor under the conditions specified in annex D		N/A
	For water valves containing live parts and that are incorporated in external hoses for connection of an appliance to the water mains, the degree of protection declared for subclause 6.5.2 of EN 60730-2-8 is IPX7		N/A
	<i>Thermal cut-outs of the capillary type shall comply with the requirements for type 2.K controls in EN 60730-2-9.</i>		N/A
24.1.5	Appliance couplers complying with IEC 60320- 1		N/A
	However, for class II appliances classified higher than IPX0, the appliance couplers complying with EN 60320-2- 3		N/A



IEC 60335-2-98			
Clause	Requirement - Test	Result - Remark	Verdict
	Interconnection couplers complying with EN 60320-2-2		N/A
24.1.6	Small lamp holders similar to E10 lampholders complying with IEC 60238, the requirements for E10 lampholders being applicable		N/A
24.1.7	For remote operation of the appliance via a telecommunication network, the relevant standard for the telecommunication interface circuitry in the appliance is J 62151		N/A
24.1.8	The relevant standard for thermal links is EN 60691		P
	Thermal links not complying with EN 60691 are considered to be an intentionally weak part for the purposes of clause 19		N/A
24.1.9	Contactors and relays, other than motor starting relays, tested as part of the appliance		N/A
	They are also tested in accordance with clause 17 of EN 60730-1, the number of cycles of operations in 24.1.4 selected according to the contactor or relay function in the appliance.....:		N/A
24.2	Helmet-type hairdryers and permanent-wave appliances incorporate switch in flexible cord (IEC 60335-2-98)		N/A
	Appliances not fitted with:		--
	- devices causing the protective device in the fixed wiring to operate in the event of a fault in the appliance		N/A
	- thermal cut-outs that can be reset by soldering, unless		N/A
	the solder has a melting point of at least 230 °C		N/A
24.3	Switches intended for all-pole disconnection of stationary appliances are directly connected to the supply terminals and have a contact separation in all poles, providing full disconnection under overvoltage category III conditions		N/A
24.4	Plugs and socket-outlets for extra-low voltage circuits and heating elements, not interchangeable with plugs and socket-outlets listed in EN 60083 or EN 60906-1 or with connectors and appliance inlets complying with the standard sheets of EN 60320-1		N/A
24.5	Capacitors in auxiliary windings of motors marked with their rated voltage and capacitance, and used accordingly		N/A
	Voltage across capacitors in series with a motor winding does not exceed 1,1 times rated voltage, when the appliance is supplied at 1,1 times rated voltage under minimum load		N/A



IEC 60335-2-98			
Clause	Requirement - Test	Result - Remark	Verdict
24.6	Working voltage of motors connected to the supply mains and having basic insulation that is inadequate for the rated voltage of the appliance, not exceeding 42 V		N/A
	In addition, the motors comply with the requirements of annex I		N/A
24.7	Detachable hose- sets for connection of appliances to the water mains comply with J 61770		N/A
	They are supplied with the appliance		N/A
	Appliances intended to be permanently connected to the water mains not connected by a detachable hose- set		N/A
24.8	Motor running capacitors in appliances for which 30.2.3 is applicable and that are permanently connected in series with a motor winding, not causing a hazard in event of a failure		N/A
	One or more of the following conditions are to be met:		--
	- the capacitors are of class P2 according to EN 60252- 1		N/A
	- the capacitors are housed within a metallic or ceramic enclosure		N/A
	- the distance of separation of the outer surface to adjacent non- metallic parts exceeds 50 mm		N/A
	- adjacent non- metallic parts within 50 mm withstand the needle- flame test of annex E		N/A
	- adjacent non- metallic parts within 50 mm classified as at least V- 1 according to EN 60695- 11- 10		N/A
25	SUPPLY CONNECTION AND EXTERNAL FLEXIBLE CORDS		--
25.1	Appliance not intended for permanent connection to fixed wiring, means for connection to the supply:		--
	- supply cord fitted with a plug, the current rating and voltage rating of the plug being not less than the corresponding ratings of its associated appliance		P
	- an appliance inlet having at least the same degree of protection against moisture as required for the appliance, or		N/A
	- pins for insertion into socket- outlets		N/A
25.2	Appliance not provided with more than one means of connection to the supply mains		P
	Stationary appliance for multiple supply may be provided with more than one means of connection, provided electric strength test of 1250 V for 1 min between each means of connection causes no breakdown		N/A
25.3	Appliance intended to be permanently connected to fixed wiring provided with one of the following means for connection to the supply mains:		--



IEC 60335-2-98			
Clause	Requirement - Test	Result - Remark	Verdict
	- a set of terminals allowing the connection of a flexible cord		N/A
	- a fitted supply cord		P
	- a set of supply leads accommodated in a suitable compartment		N/A
	- a set of terminals for the connection of cables of fixed wiring, cross-sectional areas specified in 26.6, and the appliance allows the connection of the supply conductors after the appliance has been fixed to its support		N/A
	- a set of terminals and cable entries, conduit entries, knock-outs or glands, allowing connection of appropriate types of cable or conduit, and the appliance allows the connection of the supply conductors after the appliance has been fixed to its support		N/A
	For a fixed appliance constructed so that parts can be removed to facilitate easy installation, this requirement is met if it is possible to connect the fixed wiring without difficulty after a part of the appliance has been fixed to its support		N/A
25.4	Cable and conduit entries, rated current of appliance not exceeding 16 A, dimension according to table 10 (mm).....:		N/A
	Introduction of conduit or cable does not reduce clearances or creepage distances below values specified in clause 29		N/A
25.5	Method for assembling the supply cord to the appliance:		--
	- type X attachment		N/A
	- type Y attachment		P
	- type Z attachment, if allowed in relevant part 2		N/A
	- type Z attachment allowed for (IEC 60335-2-98):		--
	- hand-held appliances (IEC 60335-2-98);		N/A
	- hairdryers with flexible hood attachment (IEC 60335-2-98);		N/A
	- heaters for detachable curlers having not more than 10 curlers (IEC 60335-2-98).		N/A
	Type X attachment, other than those with a specially prepared cord, not used for flat twin tinsel cords		N/A
	For multi-phase appliances supplied with a supply cord and that are intended to be permanently connected to fixed wiring, the supply cord is assembled to the appliance by type Y attachment		N/A
25.6	Plugs fitted with only one flexible cord		P
25.7	Supply cords, other than for class III appliances, being one of the following types:		--
	- rubber sheathed		P



IEC 60335-2-98			
Clause	Requirement - Test	Result - Remark	Verdict
	- polychloroprene sheathed		N/A
	- cross-linked polyvinyl chloride sheathed		N/A
	- polyvinyl chloride sheathed. Not used if they are likely to touch metal parts having a temperature rise exceeding 75 K during the test of clause 11		--
	- light polyvinyl chloride sheathed cord are allowed regardless of the mass of the appliance. (IEC 60335-2-98/A2)		N/A
	- ordinary polyvinyl chloride sheathed cord, for other appliances		N/A
	- heat resistant polyvinyl chloride sheathed. Not used for type X attachment other than specially prepared cords		--
	- heat-resistant light polyvinyl chloride sheathed cord , for appliances not exceeding 3 kg		N/A
	- heat-resistant polyvinyl chloride sheathed cord for other appliances		N/A
	Supply cords for class III appliances adequately insulated		N/A
	Test with 500 V for 2 min for supply cords of class III appliances that contain live parts		N/A
	Temperature rise limit of 75 K is increased to 130 K provided that the temperature rise decreases to 75 K within 5 min of the appliance being switched off. (IEC 60335-2-98/A2)		N/A
25.8	Nominal cross-sectional area of supply cords not less than table 11; rated current (A); cross-sectional area (mm <sup>2</sup> )..... :		P
25.9	Supply cords not in contact with sharp points or edges		P
25.10	Supply cord of class I appliances have a green/yellow core for earthing		N/A
	In multi-phase appliances, the colour of the neutral conductor of the <b>supply cord</b> , if any, shall be blue.		N/A
25.11	Conductors of supply cords not consolidated by soldering where they are subject to contact pressure, unless		P
	the contact pressure is provided by spring terminals		N/A
25.12	Insulation of the supply cord not damaged when moulding the cord to part of the enclosure		N/A
25.13	Inlet openings so constructed as to prevent damage to the supply cord		P
	If it is not evident from the construction of the appliance that the supply cord can be introduced without risk of damage, a non-detachable lining or non-detachable bushing shall be provided that complies with 29.3 for supplementary insulation.		N/A
25.14	Supply cords moved while in operation adequately protected against excessive flexing		P



IEC 60335-2-98			
Clause	Requirement - Test	Result - Remark	Verdict
	Force applied to supply cord of appliances provided with a swivel connection is		--
	- 20 N, for cords having nominal cross-sectional area exceeding 0,75 mm <sup>2</sup> (IEC 60335-2-98);		N/A
	- 10 N, for other cords (IEC 60335-2-98).		P
	Hand-held appliances additionally tested while mounted on an apparatus similar to figure 8 with supply cord hanging vertically and loaded with force of 10 N (IEC 60335-2-98)		P
	Oscillating part of apparatus moved through an angle of 180 ° and back to original position. (IEC 60335-2-98)		P
	Number of flexings 10 000, rate of flexing being 6 /min (IEC 60335-2-98/A2).		P
	Flexing test, as described:		--
	- applied force (N).....: 10		P
	- number of flexings.....: 10000		P
	The test does not result in:		--
	- short-circuit between the conductors, such that the current exceeds a value of twice the rated current		P
	- breakage of more than 10 % of the strands of any conductor		P
	- separation of the conductor from its terminal		P
	- loosening of any cord guard		P
	- damage to the cord or the cord guard		P
	- broken strands piercing the insulation and becoming accessible		P
25.15	For appliances with supply cord and appliances to be permanently connected to fixed wiring by a flexible cord, conductors of the supply cord relieved from strain, twisting and abrasion by use of cord anchorage		P
	The cord cannot be pushed into the appliance to such an extent that the cord or internal parts of the appliance can be damaged		P
	100 N, for <b>fixed appliances</b> regardless of the mass of the appliance the value as shown in Table 12, for other appliances	60N,0.1Nm	P
	Swivel connection not locked during tests (IEC 60335-2-98)		P
	For appliances with a swivel connection, the value of 30 N in Table 12 is increased to 60 N. (IEC 60335-2-98/A2)		P
	Cord not damaged and maxes. 2 mm displacement of the cord		P
25.16	Cord anchorages for type X attachments constructed and located so that:		--



<b>IEC 60335-2-98</b>			
Clause	Requirement - Test	Result - Remark	Verdict
	- replacement of the cord is easily possible		N/A
	- it is clear how the relief from strain and the prevention of twisting are obtained		N/A
	-they are suitable for different types of supply cord		N/A
	- cord cannot touch the clamping screws of cord anchorage if these screws are accessible, unless		N/A
	they are separated from accessible metal parts by supplementary insulation		N/A
	- the cord is not clamped by a metal screw which bears directly on the cord		N/A
	- at least one part of the cord anchorage securely fixed to the appliance, unless		N/A
	it is part of a specially prepared cord		N/A
	- screws which have to be operated when replacing the cord do not fix any other component, unless		N/A
	the appliance becomes inoperative or incomplete or the parts cannot be removed without a tool		N/A
	- if labyrinths can be bypassed the test of 25.15 is nevertheless withstood		N/A
	- for class 0, 0I and I appliances they are of insulating material or are provided with an insulating lining, unless		N/A
	failure of the insulation of the cord does not make accessible metal parts live		N/A
	- for class II appliances they are of insulating material, or		N/A
	if of metal, they are insulated from accessible metal parts by supplementary insulation		N/A
	After the test of 25.15, under the conditions specified, the conductors have not moved by more than 1 mm in the terminals		N/A
25.17	Adequate cord anchorages for type Y and Z attachment, test with the cord supplied with the appliance		P
25.18	Cord anchorages only accessible with the aid of a tool, or		P
	Constructed so that the cord can only be fitted with the aid of a tool		P
25.19	Type X attachment, glands not used as cord anchorage in portable appliances		N/A
	Tying the cord into a knot or tying the cord with string not used		N/A
25.20	The conductors of the supply cord for type Y and Z attachment insulated from accessible metal parts		P
25.21	Space for supply cord for type X attachment or for connection of fixed wiring constructed:		--





<b>IEC 60335-2-98</b>			
Clause	Requirement - Test	Result - Remark	Verdict
	- to permit checking of conductors with respect to correct positioning and connection before fitting any cover		N/A
	- so there is no risk of damage to the conductors or their insulation when fitting the cover		N/A
	- for portable appliances, so that the uninsulated end of a conductor, if it becomes free from the terminal, prevented from contact with accessible metal parts		N/A
	2 N test to the conductor for portable appliances; no contact with accessible metal parts		N/A
25.22	Appliance inlets:		--
	- live parts not accessible during insertion or removal		N/A
	Requirement not applicable to appliance inlets complying with EN 60320- 1		N/A
	- connector can be inserted without difficulty		N/A
	- the appliance is not supported by the connector		N/A
	- not for cold conditions if temp. rise of external metal parts exceeds 75 K during clause 11, unless		N/A
	the supply cord is unlikely to touch such metal parts		N/A
25.23	Interconnection cords comply with the requirements for the supply cord, except that:		N/A
	- the cross-sectional area of the conductors is determined on the basis of the maximum current during clause 11		N/A
	- the thickness of the insulation may be reduced		N/A
	If necessary, electric strength test of 16.3		N/A
25.24	Interconnection cords not detachable without the aid of a tool if compliance with this standard is impaired when they are disconnected		N/A
25.25	Dimensions of pins that are inserted into socket-outlets compatible with the dimensions of the relevant socket-outlet.		N/A
	Dimensions of pins and engagement face in accordance with the dimensions of the relevant plug in IEC/TR 60083		N/A
25.101	Swivel connections adequate for normal use of appliance (IEC 60335-2-98)		P
	Appliance operated under conditions specified in clause 11.101, number of revolutions being increased to 20 000 (IEC 60335-2-98)		P
	After test, swivel connection and supply cord fit for further use. Live parts not become accessible and appliance withstand electric strength test of 16.3 (IEC 60335-2-98)		P
26	TERMINALS FOR EXTERNAL CONDUCTORS		--



<b>IEC 60335-2-98</b>			
Clause	Requirement - Test	Result - Remark	Verdict
26.1	Appliances provided with terminals or equally effective devices for connection of external conductors		P
	Terminals only accessible after removal of a non-detachable cover, except		P
	for class III appliances that do not contain live parts		N/A
	Earthing terminals may be accessible if a tool is required to make the connections and means are provided to clamp the wire independently from its connection		N/A
26.2	Appliances with type X attachment and appliances for the connection of cables to fixed wiring provided with terminals in which connections are made by means of screws, nuts or similar devices, unless		N/A
	the connections are soldered		N/A
	Screws and nuts not used to fix any other component, except		N/A
	internal conductors, if so arranged that they are unlikely to be displaced when fitting the supply conductors		N/A
	If soldered connections used, the conductor so positioned or fixed that reliance is not placed on soldering alone, unless		N/A
	barriers provided so that neither clearances nor creepage distances between live parts and other metal parts reduced below the values for supplementary insulation if the conductor becomes free at the soldered joint		N/A
26.3	Terminals for type X attachment and for connection of cables of fixed wiring so constructed that the conductor is clamped between metal surfaces with sufficient contact pressure but without damaging the conductor		N/A
	Terminals fixed so that when the clamping means is tightened or loosened:		N/A
	- the terminal does not become loose		N/A
	- internal wiring is not subjected to stress		N/A
	- neither clearances nor creepage distances are reduced below the values in clause 29		N/A
	Compliance checked by inspection and by the test of subclause 9.6 of IEC 60999-1, the torque applied being equal to two-thirds of the torque specified (Nm).....:		N/A
	No deep or sharp indentations of the conductors		N/A
26.4	Terminals for type X attachment, except those having a specially prepared cord and those for the connection of cables of fixed wiring, no special preparation of conductors such as by soldering, use of cable lugs, eyelets or similar, and		N/A



<b>IEC 60335-2-98</b>			
Clause	Requirement - Test	Result - Remark	Verdict
	so constructed or placed that conductors prevented from slipping out when clamping screws or nuts are tightened		N/A
26.5	Terminals for type X attachment so located or shielded that if a wire of a stranded conductor escapes, no risk of accidental connection to other parts that result in a hazard		N/A
	Stranded conductor test, 8 mm insulation removed		N/A
	No contact between live parts and accessible metal parts and,		N/A
	for class II constructions, between live parts and metal parts separated from accessible metal parts by supplementary insulation only		N/A
26.6	Terminals for type X attachment and for connection of cables of fixed wiring suitable for connection of conductors with cross-sectional area according to table 13; rated current (A); nominal cross-sectional area (mm <sup>2</sup> )..... :		N/A
	If a specially prepared cord is used, terminals need only be suitable for that cord		N/A
26.7	Terminals for type X attachment, except in class III appliances not containing live parts, accessible after removal of a cover or part of the enclosure		N/A
26.8	Terminals for the connection of fixed wiring, including the earthing terminal, located close to each other		N/A
26.9	Terminals of the pillar type constructed and located as specified		N/A
26.10	Terminals with screw clamping and screwless terminals not used for flat twin tinsel cords, unless		N/A
	conductors ends fitted with means suitable for screw terminals		N/A
	Terminals with screw clamping and screwless terminals not used for type X attachments in appliances incorporating swivel connection (IEC 60335-2-98)		N/A
	Pull test of 5 N to the connection		N/A
26.11	For type Y and Z attachment, soldered, welded, crimped or similar connections may be used		P
	For class II appliances, the conductor so positioned or fixed that reliance is not placed on soldering, welding or crimping alone		P
	If soldering, welding or crimping alone used, barriers provided so that clearances and creepage distances between live parts and other metal parts are not reduced below the values for supplementary insulation if the conductor becomes free		N/A
27	PROVISION FOR EARTHING		--



IEC 60335-2-98			
Clause	Requirement - Test	Result - Remark	Verdict
27.1	Accessible metal parts of class 0I and I appliances permanently and reliably connected to an earthing terminal or earthing contact of the appliance inlet		N/A
	Earthing terminals and earthing contacts not connected to the neutral terminal		N/A
	<b>Class 0 appliances, class II appliances and class III appliances</b> shall have no provision for protective earthing. <b>Class II appliances and class III appliances</b> may incorporate an earth for functional purposes.		N/A
	Safety extra- low voltage circuits not earthed, unless		N/A
	protective extra- low voltage circuits		N/A
27.2	Clamping means of earthing terminals adequately secured against accidental loosening		N/A
	Terminals for the connection of external equipotential bonding conductors allow connection of conductors of 2,5 to 6 mm <sup>2</sup> , and		N/A
	do not provide earthing continuity between different parts of the appliance, and		N/A
	conductors cannot be loosened without the aid of a tool		N/A
	These requirements are not applicable to <b>class II appliances and class III appliances</b> that incorporate an earth for functional purposes.		N/A
27.3	For a detachable part having an earth connection and being plugged into another part of the appliance, the earth connection is made before and separated after current-carrying connections when removing the part		N/A
	These requirements are not applicable to <b>class II appliances and class III appliances</b> that incorporate an earth for functional purposes.		N/A
	For appliances with supply cords, current-carrying conductors become taut before earthing conductor, if the cord slips out of the cord anchorage		N/A
27.4	No risk of corrosion resulting from contact between parts of the earthing terminal and the copper of the earthing conductor or other metal		N/A
	Parts providing earthing continuity, other than parts of a metal frame or enclosure, have adequate resistance to corrosion		N/A
	If of steel, these parts provided with an electroplated coating with a thickness at least 5 µm		N/A
	Adequate protection against rusting of parts of coated or uncoated steel, only intended to provide or transmit contact pressure		N/A
	In the body of the earthing terminal is a part of a frame or enclosure of aluminium or aluminium alloys, precautions taken to avoid risk of corrosion		N/A



<b>IEC 60335-2-98</b>			
Clause	Requirement - Test	Result - Remark	Verdict
	These requirements are not applicable to class II appliances and class III appliances that incorporate an earth for functional purposes.		N/A
27.5	Low resistance of connection between earthing terminal and earthed metal parts		N/A
	This requirement does not apply to connections providing earthing continuity in the protective extra-low voltage circuit, provided the clearances of basic insulation are based on the rated voltage of the appliance		N/A
	Resistance not exceeding 0,1 $\Omega$ at the specified low-resistance test ( $\Omega$ )..... :		N/A
	These requirements are not applicable to class II appliances and class III appliances that incorporate an earth for functional purposes.		N/A
27.6	The printed conductors of printed circuit boards not used to provide earthing continuity in hand-held appliances.		N/A
	They may be used to provide earthing continuity in other appliances if at least two tracks are used with independent soldering points and the appliance complies with 27.5 for each circuit		N/A
	These requirements are not applicable to class II appliances and class III appliances that incorporate an earth for functional purposes.		N/A
28	<b>SCREWS AND CONNECTIONS</b>		--
28.1	Fixings, electrical connections and connections providing earthing continuity withstand mechanical stresses		P
	Screws not of soft metal liable to creep, such as zinc or aluminium		P
	Diameter of screws of insulating material min. 3 mm		N/A
	Screws of insulating material not used for any electrical connections or connections providing earthing continuity		N/A
	Screws used for electrical connections or connections providing earthing continuity screwed into metal		N/A
	Screws not of insulating material if their replacement by a metal screw can impair supplementary or reinforced insulation		N/A
	For type X attachment, screws to be removed for replacement of supply cord or for user maintenance, not of insulating material if their replacement by a metal screw impairs basic insulation		N/A
	For screws and nuts; torque-test as specified in table 14..... :	(see appended table)	P



<b>IEC 60335-2-98</b>			
Clause	Requirement - Test	Result - Remark	Verdict
28.2	Electrical connections and connections providing earthing continuity constructed so that contact pressure is not transmitted through non-ceramic insulating material liable to shrink or distort, unless		P
	there is resiliency in the metallic parts to compensate for shrinkage or distortion of the insulating material		N/A
	This requirement does not apply to electrical connections in circuits of appliances for which:		--
	- 30.2.2 is applicable and that carry a current not exceeding 0,5 A		P
	- 30.2.3 is applicable and that carry a current not exceeding 0,2 A		N/A
28.3	Space-threaded (sheet metal) screws only used for electrical connections if they clamp the parts together		N/A
	Thread-cutting (self-tapping) screws and thread rolling screws only used for electrical connections if they generate a full form standard machine screw thread		N/A
	Thread-cutting (self-tapping) screws not used if they are likely to be operated by the user or installer		N/A
	Thread-cutting, thread rolling and space threaded screws may be used in connections providing earthing continuity provided it is not necessary to disturb the connection:		--
	- in normal use,		N/A
	- during user maintenance,		N/A
	- when replacing a supply cord having a type X attachment, or		N/A
	- during installation		N/A
	At least two screws being used for each connection providing earthing continuity, unless		N/A
	the screw forms a thread having a length of at least half the diameter of the screw		N/A
28.4	Screws and nuts that make mechanical connection secured against loosening if they also make electrical connections or connections providing earthing continuity		N/A
	This requirement does not apply to screws in the earthing circuit if at least two screws are used, or		N/A
	if an alternative earthing circuit is provided		N/A
	Rivets for electrical connections or connections providing earthing continuity secured against loosening if the connections are subjected to torsion		N/A
29	<b>CLEARANCES, CREEPAGE DISTANCES AND SOLID INSULATION</b>		--
	Clearances, creepage distances and solid insulation withstand electrical stress		P



IEC 60335-2-98			
Clause	Requirement - Test	Result - Remark	Verdict
	For coatings used on printed circuits boards to protect the microenvironment (Type 1) or to provide basic insulation (Type 2), annex J applies..... :		N/A
	The microenvironment is pollution degree 1 under type 1 protection		N/A
	For type 2 protection, the spacing between the conductors before the protection is applied is not less than the values specified in Table 1 of IEC 60664- 3		N/A
	These values apply to functional, basic, supplementary and reinforced insulation..... :		N/A
29.1	Clearances not less than the values specified in table 16, taking into account the rated impulse voltage for the overvoltage categories of table 15, unless..... :	(see appended table)	P
	for basic insulation and functional insulation they comply with the impulse voltage test of clause 14		N/A
	However, if the distances are affected by wear, distortion, movement of the parts or during assembly, the clearances for rated impulse voltages of 1500 V and above are increased by 0,5 mm and the impulse voltage test is not applicable		P
	For appliances intended for use at altitudes exceeding 2 000 m, the clearances in Table 16 shall be increased according to the relevant multiplier values in Table A.2 of IEC 60664-1.		N/A
	Impulse voltage test is not applicable:		--
	- when the microenvironment is pollution degree 3, or		N/A
	- for basic insulation of class 0 and class 01 appliances or		N/A
	-to appliances intended for use at altitudes exceeding 2 000 m		N/A
	Appliances are in overvoltage category II		P
	A force of 2 N is applied to bare conductors, other than heating elements		N/A
	A force of 30 N is applied to accessible surfaces		P
29.1.1	Clearances of basic insulation withstand the overvoltages, taking into account the rated impulse voltage		P
	The values of table 16 or the impulse voltage test of clause 14 are applicable..... :	(see appended table)	N/A
	Clearance at the terminals of tubular sheathed heating elements may be reduced to 1,0 mm if the microenvironment is pollution degree 1		N/A
	Lacquered conductors of windings considered to be bare conductors		N/A
29.1.2	Clearances of supplementary insulation not less than those specified for basic insulation in table 16..... :	(see appended table)	P



<b>IEC 60335-2-98</b>			
Clause	Requirement - Test	Result - Remark	Verdict
29.1.3	Clearances of reinforced insulation not less than those specified for basic insulation in table 16, using the next higher step for rated impulse voltage..... :	(see appended table)	P
	For double insulation, with no intermediate conductive part between basic and supplementary insulation, clearances are measured between live parts and the accessible surface, and the insulation system is treated as reinforced insulation		P
29.1.4	Clearances for functional insulation are the largest values determined from:		--
	- table 16 based on the rated impulse voltage..... :	(see appended table)	P
	- table F.7a in EN 60664- 1, frequency not exceeding 30 kHz		N/A
	- clause 4 of EN 60664- 4, frequency exceeding 30 kHz		N/A
	If values of table 16 are largest, the impulse voltage test of clause 14 may be applied instead, unless		N/A
	the microenvironment is pollution degree 3, or		N/A
	the distances can be affected by wear, distortion, movement of the parts or during assembly		P
	However, clearances are not specified if the appliance complies with clause 19 with the functional insulation short-circuited		P
	Lacquered conductors of windings considered to be bare conductors		N/A
	However, clearances at crossover points are not measured		N/A
	Clearance between surfaces of PTC heating elements may be reduced to 1mm		N/A
29.1.5	Appliances having higher working voltages than rated voltage, clearances for basic insulation are the largest values determined from:		--
	- table 16 based on the rated impulse voltage..... :		N/A
	- table F.7a in EN 60664- 1, frequency not exceeding 30 kHz		N/A
	- clause 4 of EN 60664- 4, frequency exceeding 30 kHz		N/A
	If clearances for basic insulation are selected from Table F.7a of EN 60664- 1 or clause 4 of EN 60664- 4, the clearances of supplementary insulation are not less than those specified for basic insulation		N/A
	If clearances for basic insulation are selected from Table F.7a of EN 60664- 1, the clearances of reinforced insulation dimensioned as specified in Table F.7a are to withstand 160% of the withstand voltage required for basic insulation		N/A





<b>IEC 60335-2-98</b>			
Clause	Requirement - Test	Result - Remark	Verdict
	If clearances for basic insulation are selected from clause 4 of EN 60664- 4, the clearances of reinforced insulation are twice the value required for basic insulation		N/A
	If the secondary winding of a step- down transformer is earthed, or if there is an earthed screen between the primary and secondary windings, clearances of basic insulation on the secondary side not less than those specified in table 16, but using the next lower step for rated impulse voltage		N/A
	Circuits supplied with a voltage lower than rated voltage, clearances of functional insulation are based on the working voltage used as the rated voltage in table 15		N/A
29.2	Creepage distances not less than those appropriate for the working voltage, taking into account the material group and the pollution degree..... :	(see appended table)	P
	Pollution degree 2 applies, unless		P
	- precautions taken to protect the insulation; pollution degree 1		N/A
	- insulation subjected to conductive pollution; pollution degree 3		N/A
	A force of 2 N is applied to bare conductors, other than heating elements		N/A
	A force of 30 N is applied to accessible surfaces		P
	In a double insulation system, the working voltage for both the basic and supplementary insulation is taken as the working voltage across the complete double insulation system		P
29.2.1	Creepage distances of basic insulation not less than specified in table 17..... :	(see appended table)	N/A
	However, if the working voltage is periodic and has a frequency exceeding 30 kHz, the creepage distances are also determined from table 2 of IEC 60664-4, these values being used if exceeding the values in table 17..... :		N/A
	Except for pollution degree 1, corresponding creepage distance not less than the minimum specified for the clearance in table 16, if the clearance has been checked according to the test of clause 14..... :		N/A
29.2.2	Creepage distances of supplementary insulation at least those specified for basic insulation in table 17, or..... :	(see appended table)	P
	Table 2 of EN 60664- 4, as applicable..... :		N/A
29.2.3	Creepage distances of reinforced insulation at least double those specified for basic insulation in table 17, or..... :	(see appended table)	P
	Table 2 of EN 60664- 4, as applicable..... :		N/A



<b>IEC 60335-2-98</b>			
Clause	Requirement - Test	Result - Remark	Verdict
29.2.4	Creepage distances of functional insulation not less than specified in table 18.....:	(see appended table)	P
	However, if the working voltage is periodic and has a frequency exceeding 30 kHz, the creepage distances are also determined from table 2 of IEC 60664-4, these values being used if exceeding the values in table 18.....:		N/A
	Creepage distances may be reduced if the appliance complies with clause 19 with the functional insulation short-circuited		P
29.3	Supplementary and reinforced insulation have adequate thickness, or a sufficient number of layers, to withstand the electrical stresses		P
	Compliance checked:		--
	- by measurement, in accordance with 29.3.1, or		P
	- by an electric strength test in accordance with 29.3.2, or		P
	<i>for insulation, other than single layer internal wiring insulation, by an assessment of the thermal quality of the material combined with an electric strength test, in accordance with 29.3.3 and</i>		N/A
	for accessible parts of reinforced insulation consisting of a single layer, by measurement in accordance with 29.3.4, or		N/A
	- as specified in subclause 6.3 of IEC 60664-4 for insulation that is subjected to any periodic voltage having a frequency exceeding 30 kHz		N/A
	by an assessment of the thermal quality of the material according to 29.3.3 combined with an electric strength test in accordance with 23.5, for each single layer internal wiring insulation touching each other,		N/A
	Curling irons, distance through insulation between metal parts separated by supplementary insulation reduced to 0,6 mm, provided that distance through basic insulation at least 1 mm (IEC 60335-2-98)		N/A
29.3.1	Supplementary insulation have a thickness of at least 1 mm		P
	Reinforced insulation have a thickness of at least 2 mm		P
29.3.2	Each layer of material withstand the electric strength test of 16.3 for supplementary insulation		P
	Supplementary insulation consist of at least 2 layers		P
	Reinforced insulation consist of at least 3 layers		P
29.3.3	The insulation is subjected to the dry heat test Bb of EN 60068-2-2, followed by		N/A
	the electric strength test of 16.3		N/A



IEC 60335-2-98			
Clause	Requirement - Test	Result - Remark	Verdict
	If the temperature rise during the tests of clause 19 does not exceed the value specified in table 3, the test of EN 60068-2-2 is not carried out		N/A
29.3.4	Thickness of accessible parts of reinforced insulation consisting of a single layer not less than specified in table 19.....:		N/A
30	RESISTANCE TO HEAT AND FIRE		--
30.1	External parts of non-metallic material,		P
	parts supporting live parts, and		P
	parts of thermoplastic material providing supplementary or reinforced insulation		P
	sufficiently resistant to heat		P
	Ball- pressure test according to IEC 60695- 10- 2		P
	External parts tested at 40 °C plus the maximum temperature rise determined during the test of clause 11, or at 75 °C, whichever is the higher; temperature (°C).....:	(see appended table)	P
	Parts supporting live parts tested at 40 °C plus the maximum temperature rise determined during the test of clause 11, or at 125 °C, whichever is the higher; temperature (°C).....:	(see appended table)	P
	Parts of thermoplastic material providing supplementary or reinforced insulation tested at 25 °C plus the maximum temperature rise determined during clause 19, if higher; temperature (°C).....:	(see appended table)	P
	Hand dryers and hairdryers, temperature rises occurring during tests of clause 19 not taken into account (IEC 60335-2-98)		N/A
30.2	Parts of non-metallic material resistant to ignition and spread of fire		P
	This requirement does not apply to:		--
	parts having a mass not exceeding 0,5 g, provided the cumulative effect is unlikely to propagate flames that originate inside the appliance by propagating flames from one part to another, or		P
	decorative trims, knobs and other parts unlikely to be ignited or to propagate flames that originate inside the appliance		P
	Compliance checked by the test of 30.2.1, and in addition:		P
	- for attended appliances, 30.2.2 applies		P
	- for unattended appliances, 30.2.3 applies		N/A
	Heaters for detachable curlers, 30.2.3 is applicable (IEC 60335-2-98)		N/A



IEC 60335-2-98			
Clause	Requirement - Test	Result - Remark	Verdict
	Other appliances, 30.2.2 is applicable (IEC 60335-2-98)		P
	For appliances for remote operation, 30.2.3 applies		N/A
	For base material of printed circuit boards, 30.2.4 applies		P
30.2.1	Parts of non-metallic material subjected to the glow-wire test of EN 60695-2-11 at 550 °C		P
	However, test not carried out if the material is classified as having a glow-wire flammability index according to EN 60695-2-12 of at least 550 °C, or		N/A
	the material is classified at least HB40 according to EN 60695-11-10		N/A
	Parts for which the glow-wire test cannot be carried out need to meet the requirements in ISO 9772 for material classified HBF		N/A
30.2.2	Appliances operated while attended, parts of non-metallic material supporting current-carrying connections, and		P
	parts of non-metallic material within a distance of 3 mm of such connections,		P
	subjected to the glow-wire test of EN 60695-2-11		P
	The test severity is:		--
	- 750 °C, for connections carrying a current exceeding 0,5 A during normal operation		N/A
	- 650 °C, for other connections		N/A
	Glow-wire applied to an interposed shielding material, if relevant		N/A
	The glow-wire test is not carried out on parts of material classified as having a glow-wire flammability index according to IEC 60695-2-12 of at least:		--
	- 750 °C, for connections carrying a current exceeding 0,5 A during normal operation		N/A
	- 650 °C, for other connections		N/A
	The glow-wire test is also not carried out on small parts. These parts are to:		--
	- comprise material having a glow-wire flammability index of at least 750 °C, or 650 °C as appropriate, or		N/A
	- comply with the needle-flame test of annex E, or		N/A
	- comprise material classified as V-0 or V-1 according to IEC 60695-11-10..... :		N/A
	Glow-wire test not applicable to conditions as specified..... :	Hand held appliance	P
30.2.3	Appliances operated while unattended, tested as specified in 30.2.3.1 and 30.2.3.2		N/A
	The tests are not applicable to conditions as specified..... :		N/A



IEC 60335-2-98			
Clause	Requirement - Test	Result - Remark	Verdict
30.2.3.1	Parts of non-metallic material supporting connections carrying a current exceeding 0,2 A during normal operation, and		N/A
	parts of non-metallic material, other than small parts, within a distance of 3 mm,		N/A
	subjected to the glow-wire test of EN 60695-2-11 with a test severity of 850 °C		N/A
	Glow-wire applied to an interposed shielding material, if relevant		N/A
	The glow-wire test is not carried out on parts of material classified as having a glow-wire flammability index according to EN 60695-2-12 of at least 850 °C		N/A
30.2.3.2	Parts of non-metallic material supporting connections, and		N/A
	parts of non-metallic material within a distance of 3 mm,		N/A
	subjected to glow-wire test of IEC 60695-2-11		N/A
	The test severity is:		--
	- 750 °C, for connections carrying a current exceeding 0,2 A during normal operation		N/A
	- 650 °C, for other connections		N/A
	Glow-wire applied to an interposed shielding material, if relevant		N/A
	However, the glow-wire test of 750 °C or 650 °C as appropriate, is not carried out on parts of material fulfilling both or either of the following classifications:		--
	- a glow-wire ignition temperature according to EN 60695-2-13 of at least:		N/A
	- 775 °C, for connections carrying a current exceeding 0,2 A during normal operation		N/A
	- 675 °C, for other connections		N/A
	- a glow-wire flammability index according to EN 60695-2-12 of at least:		N/A
	- 750 °C, for connections carrying a current exceeding 0,2 A during normal operation		N/A
	- 650 °C, for other connections		N/A
	The glow-wire test is also not carried out on small parts. These parts are to:		--
	- comprise material having a glow-wire ignition temperature of at least 775 °C or 675 °C as appropriate, or		N/A
	- comprise material having a glow-wire flammability index of at least 750 °C or 650 °C as appropriate, or		N/A
	- comply with the needle-flame test of annex E, or		N/A
	- comprise material classified as V-0 or V-1 according to EN 60695-11-10		N/A



IEC 60335-2-98			
Clause	Requirement - Test	Result - Remark	Verdict
	The consequential needle-flame test of annex E applied to non-metallic parts that encroach within the vertical cylinder placed above the centre of the connection zone and on top of the non-metallic parts supporting current-carrying connections, and parts of non-metallic material within a distance of 3 mm of such connections if these parts are those:		--
	- parts that withstood the glow-wire test of EN 60695-2-11 of 750 °C or 650 °C as appropriate, but produce a flame that persist longer than 2 s, or		N/A
	- parts that comprised material having a glow-wire flammability index of at least 750 °C or 650 °C as appropriate, or		N/A
	- small parts, that comprised material having a glow-wire flammability index of at least 750 °C or 650 °C as appropriate, or		N/A
	- small parts for which the needle-flame test of annex E was applied, or		N/A
	- small parts for which a material classification of V-0 or V-1 was applied		N/A
	However, the consequential needle-flame test is not carried out on non-metallic parts, including small parts, within the cylinder that are:		--
	- parts having a glow-wire ignition temperature of at least 775 °C or 675 °C as appropriate, or		N/A
	- parts comprising material classified as V-0 or V-1 according to EN 60695-11-10, or		N/A
	- parts shielded by a flame barrier that meets the needle-flame test of annex E or that comprises material classified as V-0 or V-1 according to EN 60695-11-10		N/A
30.2.4	Base material of printed circuit boards subjected to the needle-flame test of annex E		N/A
	Test not applicable to conditions as specified..... :		P
30.101	Helmet-type hairdryers be resistant to fire (IEC 60335-2-98)		N/A
	Compliance checked by inspection and by applying needle-flame test of annex E to (IEC 60335-2-98):		--
	- parts of non-metallic material enclosing heating element and other electrical components (IEC 60335-2-98);		N/A
	- non-metallic parts within the enclosure (IEC 60335-2-98).		N/A
	Needle-flame test not carried out on material classified as V-0 or V-1 according to IEC 60695-11-10, provided that test sample not thicker than relevant part (IEC 60335-2-98)		N/A
31	RESISTANCE TO RUSTING		--
	Relevant ferrous parts adequately protected against rusting		N/A



IEC 60335-2-98			
Clause	Requirement - Test	Result - Remark	Verdict
	Tests specified in part 2 when necessary		N/A
32	RADIATION, TOXICITY AND SIMILAR HAZARDS		--
	Appliance does not emit harmful radiation or present a toxic or similar hazard due to their operation in normal use		P
	Compliance is checked by the limits or tests specified in part 2, if relevant		N/A
A	ANNEX A (INFORMATIVE) ROUTINE TESTS		--
	Description of routine tests to be carried out by the manufacturer		P
B	ANNEX B (NORMATIVE) APPLIANCES POWERED BY RECHARGEABLE BATTERIES		--
	The following modifications to this standard are applicable for appliances powered by batteries that are recharged in the appliance		N/A
	This annex does not apply to battery chargers		N/A
	Three forms of construction covered:		--
	a) Appliance supplied directly from the supply mains or a renewable energy source, the battery charging circuitry and other supply unit circuitry incorporated within the appliance		N/A
	b) The part of the appliance incorporating the battery is supplied from the supply mains or a renewable energy source, via a detachable supply unit. The battery charging circuitry is incorporated within the part of the appliance containing the battery		N/A
	c) The part of the appliance incorporating the battery is supplied from the supply mains or a renewable energy source, via a detachable supply unit. The battery charging circuitry is incorporated within the detachable supply unit		N/A
3.1.9	Appliance operated under the following conditions:		--
	- the appliance, supplied by its fully charged battery, operated as specified in relevant part 2		N/A
	- the battery is charged, the battery being initially discharged to such an extent that the appliance cannot operate		N/A
	- if possible, the appliance is supplied from the supply mains through its battery charger, the battery being initially discharged to such an extent that the appliance cannot operate. The appliance is operated as specified in relevant part 2		N/A
	- if the appliance incorporates inductive coupling between two parts that are detachable from each other, the appliance is supplied from the supply mains with the detachable part removed		N/A



<b>IEC 60335-2-98</b>			
Clause	Requirement - Test	Result - Remark	Verdict
3.6.2	Part to be removed in order to discard the battery is not considered to be detachable		N/A
5.B.101	Appliances supplied from the supply mains tested as specified for motor-operated appliances		N/A
7.1	Battery compartment for batteries intended to be replaced by the user, marked with battery voltage and polarity of the terminals		N/A
	The positive terminal indicated by symbol IEC 60417-5005 and the negative terminal by symbol EN 60417-5006		N/A
	Appliances intending to be supplied from a detachable supply unit marked with symbol IEC 60417-6181 and its type reference along with symbol ISO 7000-0790 (2004-01), or		N/A
	use only with <model designation> supply unit		N/A
7.6	Symbols 60417-5005 and EN 60417-5006		N/A
	Use only with <model designation> supply unit		N/A
7.12	The instructions give information regarding charging		N/A
	The instructions for appliances incorporating batteries intended to be replaced by the user includes required information		N/A
	Details about how to remove batteries containing materials hazardous to the environment given		N/A
	For appliances intending to be supplied from a detachable supply unit for the purposes of recharging the battery, the type reference of the detachable supply unit is stated along with the following:		--
	WARNING: For the purposes of recharging the battery, only use the detachable supply unit provided with this appliance		N/A
7.15	Markings placed on the part of the appliance connected to the supply mains		N/A
	The type reference of the detachable supply unit is placed in close proximity to the symbol		N/A
8.2	Appliances having batteries that according to the instruction may be replaced by the user need only have basic insulation between live parts and the inner surface of the battery compartment		N/A
	If the appliance can be operated without batteries, double or reinforced insulation required		N/A
11.7	The battery is charged for the period stated in the instructions or 24 h..... :		N/A
11.8	Temperature rise of the battery surface does not exceed the limit in the battery manufacturer's specification; measured (K); limit (K) .....		N/A
	If no limit specified, the temperature rise does not exceed 20 K; measured (K)		N/A





IEC 60335-2-98			
Clause	Requirement - Test	Result - Remark	Verdict
19.1	Appliances subjected to tests of 19.B.101, 19.B.102 and 19.B.103		N/A
19.10	Not applicable		N/A
19.B.101	Appliances supplied at rated voltage for 168 h, the battery being continually charged		N/A
19.B.102	For appliances having batteries that can be removed without the aid of a tool, short-circuit of the terminals of the battery, the battery being fully charged,		N/A
19.B.103	Appliances having batteries replaceable by the user supplied at rated voltage under normal operation with the battery removed or in any position allowed by the construction		N/A
19.13	The battery does not rupture or ignite		N/A
21.B.101	Appliances having pins for insertion into socket-outlets have adequate mechanical strength		N/A
	Part of the appliance incorporating the pins subjected to the free fall test, procedure 2, of EN 60068-2-31, the number of falls being:		--
	- 100, if the mass of the part does not exceed 250 g (g)..... :		N/A
	- 50, if the mass of the part exceeds 250 g..... :		N/A
	After the test, the requirements of 8.1, 15.1.1, 16.3 and clause 29 are met		N/A
22.3	Appliances having pins for insertion into socket-outlets tested as fully assembled as possible		N/A
25.13	An additional lining or bushing not required for interconnection cords in class III appliances or class III constructions operating at safety extra-low voltage not containing live parts		N/A
30.2	For parts of the appliance connected to the supply mains during the charging period, 30.2.3 applies		N/A
	For other parts, 30.2.2 applies		N/A
C	ANNEX C (NORMATIVE) AGEING TEST ON MOTORS		--
	Tests, as described, carried out when doubt with regard to the temperature classification of the insulation of a motor winding		N/A
	Test conditions as specified		N/A
D	ANNEX D (NORMATIVE) THERMAL MOTOR PROTECTORS		--
	Applicable to appliances having motors that incorporate thermal motor protectors necessary for compliance with the standard		N/A
	Test conditions as specified		N/A
E	ANNEX E (NORMATIVE) NEEDLE-FLAME TEST		--



IEC 60335-2-98			
Clause	Requirement - Test	Result - Remark	Verdict
	Needle-flame test carried out in accordance with IEC 60695- 11- 5, with the following modifications:		--
7	Severities		--
	The duration of application of the test flame is 30 s ± 1 s		N/A
9	Test procedure		--
9.1	The specimen so arranged that the flame can be applied to a vertical or horizontal edge as shown in the examples of figure 1		N/A
9.2	The first paragraph does not apply		N/A
	If possible, the flame is applied at least 10 mm from a corner		N/A
9.3	The test is carried out on one specimen		N/A
	If the specimen does not withstand the test, the test may be repeated on two additional specimens, both withstanding the test		N/A
11	Evaluation of test results		--
	The duration of burning not exceeding 30 s		N/A
	However, for printed circuit boards, the duration of burning not exceeding 15 s		N/A
F	ANNEX F (NORMATIVE) CAPACITORS		--
	Capacitors likely to be permanently subjected to the supply voltage, and used for radio interference suppression or voltage dividing, comply with the following clauses of EN 60384- 14, with the following modifications:		--
1.5	Terms and definitions		--
1.5.3	Class X capacitors tested according to subclass X2		N/A
1.5.4	This subclause is applicable		N/A
1.6	Marking		--
	Items a) and b) are applicable		N/A
3.4	Approval testing		--
3.4.3.2	Table 3 is applicable as described		N/A
4.1	Visual examination and check of dimensions		--
	This subclause is applicable		N/A
4.2	Electrical tests		--
4.2.1	This subclause is applicable		N/A
4.2.5	This subclause is applicable		N/A
4.2.5.2	Only table 11 is applicable		N/A
	Values for test A apply		N/A
	However, for capacitors in heating appliances the values for test B or C apply		N/A



IEC 60335-2-98			
Clause	Requirement - Test	Result - Remark	Verdict
4.12	Damp heat, steady state		--
	This subclause is applicable		N/A
	Only insulation resistance and voltage proof are checked		N/A
4.13	Impulse voltage		--
	This subclause is applicable		N/A
4.14	Endurance		--
	Subclauses 4.14.1, 4.14.3, 4.14.4 and 4.14.7 are applicable		N/A
4.14.7	Only insulation resistance and voltage proof are checked		N/A
	No visible damage		N/A
4.17	Passive flammability test		--
	This subclause is applicable		N/A
4.18	Active flammability test		--
	This subclause is applicable		N/A
G	ANNEX G (NORMATIVE) SAFETY ISOLATING TRANSFORMERS		--
	The following modifications to this standard are applicable for safety isolating transformers:		--
7	Marking and instructions		--
7.1	Transformers for specific use marked with:		--
	- name, trademark or identification mark of the manufacturer or responsible vendor.....:		N/A
	- model or type reference..... :		N/A
17	Overload protection of transformers and associated circuits		--
	Fail-safe transformers comply with subclause 15.5 of J 61558- 1		N/A
22	Construction		--
	Subclauses 19.1 and 19.1.2 of IEC 61558- 2-6 are applicable		N/A
29	Clearances, creepage distances and solid insulation		--
29.1, 29.2, 29.3	The distances specified in items 2a, 2c and 3 in table 13 of IEC 61558- 1 apply		N/A
	For insulated winding wires complying with subclause 19.12.3 of IEC 61558- 1 there are no requirements for clearances or creepage distances		N/A
	For windings providing reinforced insulation, the distance specified in item 2c of table 13 of J 61558- 1 is not assessed		N/A



IEC 60335-2-98			
Clause	Requirement - Test	Result - Remark	Verdict
	For safety isolating transformers subjected to periodic voltages with a frequency exceeding 30 kHz, the clearances, creepage distances and solid insulation values specified in EN 60664-4 are applicable, if greater than the values specified in items 2a, 2c and 3 in table 13 of IEC 61558-1		N/A
H	ANNEX H (NORMATIVE) SWITCHES		--
	Switches comply with the following clauses of J 61058- 1, as modified below:		--
	The tests of IEC 61058- 1 carried out under the conditions occurring in the appliance		P
	Before being tested, switches are operated 20 times without load		P
8	Marking and documentation		--
	Switches are not required to be marked		P
	However, a switch that can be tested separately from the appliance marked with the manufacturer's name or trade mark and the type reference		N/A
13	Mechanism		--
	The tests may be carried out on a separate sample		P
15	Insulation resistance and dielectric strength		--
15.1	Not applicable		N/A
15.2	Not applicable		N/A
15.3	Applicable for full disconnection and micro-disconnection		P
17	Endurance		--
	Compliance is checked on three separate appliances or switches		P
	For 17.2.4.4, the number of cycles declared according to 7.1.4 is 10 000, unless		P
	otherwise specified in 24.1.3 of the relevant part 2 of EN 60335..... :		N/A
	Switches for operation under no load and which can be operated only by a tool, and		N/A
	switches operated by hand that are interlocked so that they cannot be operated under load,		N/A
	are not subjected to the tests		N/A
	However, switches without this interlock are subjected to the test of 17.2.4.4 for 100 cycles of operation		N/A
	Subclauses 17.2.2 and 17.2.5.2 not applicable		P
	The ambient temperature during the test is that occurring in the appliance during the test of clause 11 in EN 60335- 1		P



IEC 60335-2-98			
Clause	Requirement - Test	Result - Remark	Verdict
	The temperature rise of the terminals not more than 30 K above the temperature rise measured in clause 11 of EN 60335- 1 (K).....:		P
20	Clearances, creepage distances, solid insulation and coatings of rigid printed board assemblies		--
	Applicable to clearances across full disconnection and micro-disconnection. It is also applicable to creepage distances for functional insulation, across full disconnection and microdisconnection, as stated in Table 24.		P
I	ANNEX I (NORMATIVE) MOTORS HAVING BASIC INSULATION THAT IS INADEQUATE FOR THE RATED VOLTAGE OF THE APPLIANCE		--
	The following modifications to this standard are applicable for motors having basic insulation that is inadequate for the rated voltage of the appliance:		--
8	Protection against access to live parts		--
8.1	Metal parts of the motor are considered to be bare live parts		N/A
11	Heating		--
11.3	The temperature rise of the body of the motor is determined instead of the temperature rise of the windings		N/A
11.8	The temperature rise of the body of the motor, where in contact with insulating material, not exceeding values in table 3 for the relevant insulating material		N/A
16	Leakage current and electric strength		--
16.3	Insulation between live parts of the motor and its other metal parts is not subjected to the test		N/A
19	Abnormal operation		--
19.1	The tests of 19.7 to 19.9 are not carried out		N/A
19.1.101	Appliance operated at rated voltage with each of the following fault conditions:		--
	- short circuit of the terminals of the motor, including any capacitor incorporated in the motor circuit		P
	- short circuit of each diode of the rectifier		N/A
	- open circuit of the supply to the motor		N/A
	- open circuit of any parallel resistor, the motor being in operation		N/A
	Only one fault simulated at a time, the tests carried out consecutively		N/A
22	Construction		--
22.1.101	For class I appliances incorporating a motor supplied by a rectifier circuit, the d.c. circuit being insulated from accessible parts of the appliance by double or reinforced insulation		N/A
	Compliance checked by the tests specified for double and reinforced insulation		N/A



IEC 60335-2-98			
Clause	Requirement - Test	Result - Remark	Verdict
J	ANNEX J (NORMATIVE) COATED PRINTED CIRCUIT BOARDS		--
	Testing of protective coatings of printed circuit boards carried out in accordance with IEC 60664- 3 with the following modifications:		--
5.7	Conditioning of the test specimens		--
	When production samples are used, three samples of the printed circuit board are tested		N/A
5.7.1	Cold		--
	The test is carried out at -25 °C		N/A
5.7.3	Rapid change of temperature		--
	Severity 1 is specified		N/A
5.9	Additional tests		--
	This subclause is not applicable		N/A
K	ANNEX K (NORMATIVE) OVERVOLTAGE CATEGORIES		--
	The information on overvoltage categories is extracted from EN 60664- 1		P
	Overvoltage category is a numeral defining a transient overvoltage condition		P
	Equipment of overvoltage category IV is for use at the origin of the installation		N/A
	Equipment of overvoltage category III is equipment in fixed installations and for cases where the reliability and the availability of the equipment is subject to special requirements		N/A
	Equipment of overvoltage category II is energy consuming equipment to be supplied from the fixed installation		P
	If such equipment is subjected to special requirements with regard to reliability and availability, overvoltage category III applies		N/A
	Equipment of overvoltage category I is equipment for connection to circuits in which measures are taken to limit transient overvoltages to an appropriate low level		N/A
L	ANNEX L (INFORMATIVE) GUIDANCE FOR THE MEASUREMENT OF CLEARANCES AND CREEPAGE DISTANCES		--
	Information for the determination of clearances and creepage distances		P
M	ANNEX M (NORMATIVE) POLLUTION DEGREE		--
	The information on pollution degrees is extracted from IEC 60664- 1		P
	Pollution		--



IEC 60335-2-98			
Clause	Requirement - Test	Result - Remark	Verdict
	The microenvironment determines the effect of pollution on the insulation, taking into account the macroenvironment		P
	Means may be provided to reduce pollution at the insulation by effective enclosures or similar		P
	Minimum clearances specified where pollution may be present in the microenvironment		P
	Degrees of pollution in the microenvironment		--
	For evaluating creepage distances, the following degrees of pollution in the microenvironment are established:		--
	- pollution degree 1: no pollution or only dry, non- conductive pollution occurs. The pollution has no influence		N/A
	- pollution degree 2: only non- conductive pollution occurs, except that occasionally a temporary conductivity caused by condensation is to be expected		P
	- pollution degree 3: conductive pollution occurs or dry non- conductive pollution occurs that becomes conductive due to condensation that is to be expected		N/A
	- pollution degree 4: the pollution generates persistent conductivity caused by conductive dust or by rain or snow		N/A
N	ANNEX N (NORMATIVE) PROOF TRACKING TEST		--
	The proof tracking test is carried out in accordance with IEC 60112 with the following modifications:		--
7	Test apparatus		--
7.3	Test solutions		--
	Test solution A is used		P
10	Determination of proof tracking index (PTI)		--
10.1	Procedure		--
	The proof voltage is 100 V, 175 V, 400 V or 600 V:		P
	The test is carried out on five specimens		P
	In case of doubt, additional test with proof voltage reduced by 25 V, the number of drops increased to 100		N/A
10.2	Report		--
	The report states if the PTI value was based on a test using 100 drops with a test voltage of (PTI-25) V		N/A
O	ANNEX O (INFORMATIVE) SELECTION AND SEQUENCE OF THE TESTS OF clause 30		P
	Description of tests for determination of resistance to heat and fire		N/A



IEC 60335-2-98			
Clause	Requirement - Test	Result - Remark	Verdict
P	ANNEX P (INFORMATIVE) GUIDANCE FOR THE APPLICATION OF THIS STANDARD TO APPLIANCES USED IN WARM DAMP EQUABLE CLIMATES		--
	Modifications applicable for class 0 and 01 appliances having a rated voltage exceeding 150 V, intended to be used in countries having a warm damp equable climate and that are marked WDaE		--
	Modifications may also be applied to class 1 appliances having a rated voltage exceeding 150 V, intended to be used in countries having a warm damp equable climate and that are marked WDaE, if liable to be connected to a supply mains that excludes the protective earthing conductor		--
5.7	The ambient temperature for the tests of clauses 11 and 13 is 40 +3/0 °C		N/A
7.1	The appliance marked with the letters WDaE		N/A
7.12	The instructions state that the appliance is to be supplied through a residual current device (RCD) having a rated residual operating current not exceeding 30 mA		N/A
	The instructions state that the appliance is considered to be suitable for use in countries having a warm damp equable climate, but may also be used in other countries		N/A
11.8	The values of Table 3 are reduced by 15 K		N/A
13.2	The leakage current for class I appliances not exceeding 0,5 mA		N/A
15.3	The value of t is 37 °C		N/A
16.2	The leakage current for class I appliances not exceeding 0,5 mA (mA):		N/A
19.13	The leakage current test of 16.2 is applied in addition to the electric strength test of 16.3		N/A
Q	ANNEX Q (INFORMATIVE) SEQUENCE OF TESTS FOR THE EVALUATION OF ELECTRONIC CIRCUITS		--
	Description of tests for appliances incorporating electronic circuits		--
R	ANNEX R (NORMATIVE) SOFTWARE EVALUATION		--
	Programmable electronic circuits requiring software incorporating measures to control the fault/error conditions specified in table R.1 or R.2 validated in accordance with the requirements of this annex		N/A
R.1	Programmable electronic circuits using software		--
	Programmable electronic circuits requiring software incorporating measures to control the fault/error conditions specified in table R.1 or R.2 constructed so that the software does not impair compliance with the requirements of this standard		N/A
R.2	Requirements for the architecture		--





<b>IEC 60335-2-98</b>			
Clause	Requirement - Test	Result - Remark	Verdict
	Programmable electronic circuits requiring software incorporating measures to control the fault/error conditions specified in table R.1 or R.2 use measures to control and avoid software-related faults/errors in safety-related data and safety-related segments of the software		N/A
R.2.1.1	Programmable electronic circuits requiring software incorporating measures to control the fault/error conditions specified in table R.2 have one of the following structures:		--
	- single channel with periodic self-test and monitoring		N/A
	- dual channel (homogenous) with comparison		N/A
	- dual channel (diverse) with comparison		N/A
	Programmable electronic circuits requiring software incorporating measures to control the fault/error conditions specified in table R.1 have one of the following structures:		--
	- single channel with functional test		N/A
	- single channel with periodic self-test		N/A
	- dual channel without comparison		N/A
R.2.2	Measures to control faults/errors		--
R.2.2.1	When redundant memory with comparison is provided on two areas of the same component, the data in one area is stored in a different format from that in the other area		N/A
R.2.2.2	Programmable electronic circuits with functions requiring software incorporating measures to control the fault/error conditions specified in table R.2 and that use dual channel structures with comparison, have additional fault/error detection means for any fault/errors not detected by the comparison		N/A
R.2.2.3	For programmable electronic circuits with functions requiring software incorporating measures to control the fault/error conditions specified in table R.1 or R.2, means are provided for the recognition and control of errors in transmissions to external safety-related data paths		N/A
R.2.2.4	For programmable electronic circuits with functions requiring software incorporating measures to control the fault/error conditions specified in table R.1 or R.2, the programmable electronic circuits incorporate measures to address the fault/errors in safety-related segments and data indicated in table R.1 and R.2 as appropriate		N/A
R.2.2.5	For programmable electronic circuits with functions requiring software incorporating measures to control the fault/error conditions specified in table R.1 or R.2, detection of a fault/error occur before compliance with clause 19 is impaired		N/A



IEC 60335-2-98			
Clause	Requirement - Test	Result - Remark	Verdict
R.2.2.6	The software is referenced to relevant parts of the operating sequence and the associated hardware functions		N/A
R.2.2.7	Labels used for memory locations are unique		N/A
R.2.2.8	The software is protected from user alteration of safety-related segments and data		N/A
R.2.2.9	Software and safety-related hardware under its control is initialized and terminates before compliance with clause 19 is impaired		N/A
R.3	Measures to avoid errors		--
R.3.1	General		--
	For programmable electronic circuits with functions requiring software incorporating measures to control the fault/error conditions specified in table R.1 or R.2, the following measures to avoid systematic fault in the software are applied		--
	Software that incorporates measures used to control the fault/error conditions specified in table R.2 is inherently acceptable for software required to control the fault/error conditions specified in table R.1		N/A
R.3.2	Specification		--
R.3.2.1	Software safety requirements:	Software Id:	N/A
	The specification of the software safety requirements includes the descriptions listed		N/A
R.3.2.2	Software architecture		--
R.3.2.2.1	The specification of the software architecture includes the aspects listed - techniques and measures to control software faults/errors (refer to R.2.2); - interactions between hardware and software; - partitioning into modules and their allocation to the specified safety functions; - hierarchy and call structure of the modules (control flow); - interrupt handling; - data flow and restrictions on data access; - architecture and storage of data; - time-based dependencies of sequences and data		N/A
R.3.2.2.2	The architecture specification is validated against the specification of the software safety requirements by static analysis		N/A
R.3.2.3	Module design and coding		--
R.3.2.3.1	Based on the architecture design, software is suitably refined into modules		N/A
	Software module design and coding is implemented in a way that is traceable to the software architecture and requirements		N/A
R.3.2.3.2	Software code is structured		N/A



IEC 60335-2-98			
Clause	Requirement - Test	Result - Remark	Verdict
R.3.2.3.3	Coded software is validated against the module specification by static analysis		N/A
	The module specification is validated against the architecture specification by static analysis		N/A
R.3.3.3	Software validation		--
	The software is validated with reference to the requirements of the software safety requirements specification		N/A
	Compliance is checked by simulation of:		--
	- input signals present during normal operation		N/A
	- anticipated occurrences		N/A
	- undesired conditions requiring system action		N/A
S	ANNEX S (NORMATIVE) BATTERY OPERATED APPLIANCES POWERED BY BATTERIES THAT ARE NON-RECHARGEABLE OR NOT RECHARGED IN THE APPLIANCE		--
	The following modifications to this standard are applicable for battery-operated appliances where the batteries are either non-rechargeable (primary batteries), or		N/A
	rechargeable batteries (secondary batteries) that are not recharged in the appliance		N/A
5.8.1	If the supply terminals for the connection of the battery have no indication of polarity, the more unfavourable polarity is applied		N/A
5.S.101	Appliances intended for use with a battery box are tested with the battery box supplied with the appliance or with the battery box recommended in the instructions		N/A
5.S.102	Appliances are tested as motor-operated appliances.		N/A
7.1	Appliances marked with the battery voltage (V) and the polarity of the terminals, unless ..... : the polarity is irrelevant		N/A
	Appliances also marked with:		--
	– name, trade mark or identification mark of the manufacturer or responsible vendor..... : – model or type reference ..... : – IP number according to degree of protection against ingress of water, other than IPX0 .. : – type reference of battery or batteries ..... :		N/A
	If relevant, the positive terminal is indicated by the symbol IEC 60417-5005 and the negative terminal by the symbol IEC 60417-5006		N/A
	If appliances use more than one battery, they are marked to indicate correct polarity connection of the batteries		N/A



IEC 60335-2-98			
Clause	Requirement - Test	Result - Remark	Verdict
7.6	Additional symbols		N/A
7.12	The instructions contain the following, as applicable:		--
	– the types of batteries that may be used		N/A
	– how to remove and insert the batteries		N/A
	– non-rechargeable batteries are not to be recharged		N/A
	– rechargeable batteries are to be removed from the appliance before being charged		N/A
	– different types of batteries or new and used batteries are not to be mixed		N/A
	– batteries are to be inserted with the correct polarity		N/A
	– exhausted batteries are to be removed from the appliance and safely disposed of		N/A
	– if the appliance is to be stored unused for a long period, the batteries are removed		N/A
	– the supply terminals are not to be short-circuited		N/A
11.5	Appliances are supplied with the most unfavourable supply voltage between		--
	– 0,55 and 1,0 times the battery voltage, if the appliance can be used with non-rechargeable batteries		N/A
	– 0,75 and 1,0 times battery voltage, if the appliance is designed for use with rechargeable batteries only		N/A
	The values specified in Table S.101 for the internal resistance per cell of the battery is taken into account		N/A
19.1	The tests are carried out with the battery fully charged unless otherwise specified		N/A
19.13	The battery does not rupture or ignite		N/A
19.S.101	Appliances are supplied with the voltage specified in 11.5. The supply terminals having an indication of polarity are connected to the opposite polarity, unless		N/A
	such a connection is unlikely to occur due to the construction of the appliance		N/A
19.S. 102	For appliances with provision for multiple batteries, one or more of the batteries are reversed and the appliance is operated, if reversal of batteries is allowed by the construction		N/A
25.5	The flexible leads or flexible cord used to connect an external battery or battery box in is connected to the appliance by a type X attachment		N/A
25.13	This requirement is not applicable to the flexible leads or flexible cord connecting external batteries or a battery box with an appliance		N/A



<b>IEC 60335-2-98</b>			
Clause	Requirement - Test	Result - Remark	Verdict
25.S.101	Appliances have suitable means for connection of the battery. If the type of battery is marked on the appliance, the means of connection is suitable for this type of battery		N/A
26.5	Terminal devices in an appliance for the connection of the flexible leads or flexible cord connecting an external battery or battery box are so located or shielded that there is no risk of accidental connection between supply terminals		N/A
30.2.3.2	There is no battery in the area of the vertical cylinder used for the consequential needle flame test, unless		N/A
	the battery is shielded by a barrier that meets the needle flame test of Annex E, or		N/A
	that comprises material classified as V-0 or V-1 according to EN 60695-11-10		N/A



10.1	TABLE: Power input deviation					P
Input deviation of/at:	P rated (W)	P measured (W)	$\Delta P$ (W, %)	Required $\Delta P$ (W, %)	Remark	
110V	150	148.6	-0.94%	5%	P	
240V	150	150.3	0.2%	5%	P	
supplementary information:						

10.2	TABLE: Current deviation					N/A
Current deviation of/at:	I rated (A)	I measured (A)	$\Delta I$ (A, %)	Required $\Delta I$ (A, %)	Remark	
--	--	--	--	--	--	
Supplementary information:						

11.8	TABLE: Heating test, thermocouples			P
	Test voltage (V).....	254.4 V		—
	Ambient (°C).....	24.2		—
Thermocouple locations		Max. temperature rise measured, $\Delta T$ (K)	Max. temperature rise limit, $\Delta T$ (K)	
Power cord		10.2	50	
Internal of wire		26.3	55	
Enclosure, inner		42.5	Cl. 30	
Knob switch		5.2	60	
Internal of switch		7.3	Cl. 30	
Test floor		40.5	65	
supplementary information:				

11.8	TABLE: Heating test, resistance method					N/A
	Test voltage (V).....	--			—	
	Ambient, t1 (°C).....	--			—	
	Ambient, t2 (°C).....	--			—	
Temperature rise of winding		R1 ( $\Omega$ )	R2 ( $\Omega$ )	$\Delta T$ (K)	Max. $\Delta T$ (K)	Insulation class
--		--	--	--	--	--
Supplementary information:						



<b>13.2</b>	<b>TABLE: Leakage current</b>		P
	Heating appliances: 1,15 x rated input (W).....:		—
	Motor-operated and combined appliances: 1,06 x rated voltage (V).....:	254.4	—
Leakage current between		I (mA)	Max. allowed I (mA)
Live parts and accessible surface		0.09	0.35 peak
Supplementary information:			

<b>13.3</b>	<b>TABLE: Electric strength</b>		P
Test voltage applied between:		Voltage (V)	Breakdown (Yes/No)
Live parts and accessible surface		3000	No
Supplementary information:			

<b>14</b>	<b>TABLE: Transient overvoltages</b>					N/A
Clearance between:		CI (mm)	Required CI (mm)	Rated impulse voltage (V)	Impulse test voltage (V)	Flashover (Yes/No)
--		--	--	--	--	--
Supplementary information:						

<b>16.2</b>	<b>TABLE: Leakage current</b>		P
	Single phase appliances: 1,06 x rated voltage (V).....:	254.4	—
	Three phase appliances 1,06 x rated voltage divided by $\sqrt{3}$ (V).....:		—
Leakage current between		I (mA)	Max. allowed I (mA)
Live parts and accessible surface		0.09	0.25
Supplementary information:			

<b>16.3</b>	<b>TABLE: Electric strength</b>		P
Test voltage applied between:		Voltage (V)	Breakdown (Yes/No)
Live parts and accessible surface		3000	No
Supplementary information:			

<b>17</b>	<b>TABLE: Overload protection, thermocouple measurements</b>		N/A
Temperature rise of part/at:		$\Delta T$ (K)	Max. $\Delta T$ (K)
--		--	--
Supplementary information:			



<b>17</b>	<b>TABLE: Overload protection, resistance method</b>					N/A
	Test voltage (V).....:	--			—	
	Ambient, t1 (°C).....:	--			—	
	Ambient, t2 (°C).....:	--			—	
Temperature of winding		R1 (Ω)	R2 (Ω)	ΔT (K)	T (°C)	Max. T (°C)
--		--	--	--	--	--
Supplementary information:						

<b>19</b>	<b>Abnormal operation conditions</b>						<b>P</b>
Operational characteristics		YES/NO	Operational conditions				
Are there electronic circuits to control the appliance operation?		Yes					
Are there “off” or “stand-by” position?		Yes					
The unintended operation of the appliance results in dangerous malfunction?		No					
Sub-clause	Operating conditions description	Test results description	PEC description	EMP 19.11.4	Software type required	19.11.3 PEC	Final result
19.2	N/A	N/A	N/A	N/A	N/A	N/A	N/A
19.3	N/A	N/A	N/A	N/A	N/A	N/A	N/A
19.4	N/A	N/A	N/A	N/A	N/A	N/A	N/A
19.5	N/A	N/A	N/A	N/A	N/A	N/A	N/A
19.6	N/A	N/A	N/A	N/A	N/A	N/A	N/A
19.7	N/A	N/A	N/A	N/A	N/A	N/A	P
19.8	N/A	N/A	N/A	N/A	N/A	N/A	N/A
19.9	N/A	N/A	N/A	N/A	N/A	N/A	N/A
19.10	N/A	N/A	N/A	N/A	N/A	N/A	N/A
19.11.2	Failures on PCB like described in cl.19.11.2	various comply with clause 19.13	--	--	--	--	P
19.11.4.8	N/A	N/A	N/A	N/A	N/A	N/A	N/A
19.15	N/A	N/A	N/A	N/A	N/A	N/A	N/A
19.101	N/A	N/A	N/A	N/A	N/A	N/A	N/A
19.102	N/A	N/A	N/A	N/A	N/A	N/A	N/A
Supplementary information:							





<b>19.7</b>	<b>TABLE: Abnormal operation, locked rotor/moving parts</b>					N/A
	Test voltage (V).....:					—
	Ambient, t1 (°C).....:					—
	Ambient, t2 (°C).....:					—
Temperature of winding	R1 (Ω)	R2 (Ω)	ΔT (K)	T (°C)	Max. T (°C)	
--	--	--	--	--	--	--
Supplementary information:						

<b>19.9</b>	<b>TABLE: Abnormal operation, running overload</b>					N/A
	Test voltage (V).....:		--			—
	Ambient, t1 (°C).....:		--			—
	Ambient, t2 (°C).....:		--			—
Temperature of winding	R1 (Ω)	R2 (Ω)	ΔT (K)	T (°C)	Max. T (°C)	
--	--	--	--	--	--	--
Supplementary information:						

<b>19.7</b>	<b>TABLE: Abnormal operation, locked rotor/moving parts</b>					N/A
	<b>Test voltage (V).....:</b>	--				—
	<b>Ambient (°C).....:</b>	--				—
Temperature rise of part/at:	Max. temperature rise measured, Δ T (K)		Max. temperature rise limit, Δ T (K)			
--	--		--			--
supplementary information:						

<b>28.1</b>	<b>TABLE: Threaded part torque test</b>			P
Threaded part identification	Diameter of thread (mm)	Column number (I, II, or III)	Applied torque (Nm)	
Housing	2.9	II	0.5	
Supplementary information:				



<b>29.1</b>		<b>TABLE: Clearances</b>				P
		Overvoltage category.....		II		—
		Type of insulation:				
Rated impulse voltage (V):	Min. cl (mm)	Basic (mm)	Supplement-ary (mm)	Reinforced (mm)	Functional (mm)	Verdict / Remark
330	0,2* / 0,5 / 0,8**	--	--	--	--	N/A
500	0,2* / 0,5 / 0,8**	--	--	--	--	N/A
800	0,2* / 0,5 / 0,8**	--	--	--	--	N/A
1 500	0,5 / 0,8** / 1,0***	--	--	--	--	N/A
2 500	1,5 / <b>2,0***</b>	--	X	--	X	P
4 000	3,0 / <b>3,5***</b>	--	--	X	--	P
6 000	5,5 / 6,0***	--	--	--	--	N/A
8 000	8,0 / 8,5***	--	--	--	--	N/A
10 000	11,0 / 11,5***	--	--	--	--	N/A
Supplementary information: *) For tracks on printed circuit boards if pollution degree 1 and 2 **) For pollution degree 3 ***) If the construction is affected by wear, distortion, movement of the parts or during assembly						



29.2	TABLE: Creepage distances, basic, supplementary and reinforced insulation										P
Working voltage (V)	Creepage distance (mm) Pollution degree										
	1	2			3			Type of insulation			
	Material group				Material group						
	I	II	IIIa/IIIb	I	II	IIIa/IIIb*)	B**)	S**)	R**)	Verdict	
≤50	0,18	0,6	0,85	1,2	1,5	1,7	1,9		—	—	N/A
≤50	0,18	0,6	0,85	1,2	1,5	1,7	1,9	—		—	N/A
≤50	0,36	1,2	1,7	2,4	3,0	3,4	3,8	—	—		N/A
125	0,28	0,75	1,05	1,5	1,9	2,1	2,4		—	—	N/A
125	0,28	0,75	1,05	1,5	1,9	2,1	2,4	—		—	N/A
125	0,56	1,5	2,1	3,0	3,8	4,2	4,8	—	—		N/A
250	0,56	1,25	1,8	2,5	3,2	3,6	4,0		—	—	N/A
250	0,56	1,25	1,8	<b>2,5</b>	3,2	3,6	4,0	—	X	—	P
250	1,12	2,5	3,6	<b>5,0</b>	6,4	7,2	8,0	—	—	X	P
400	1,0	2,0	2,8	4,0	5,0	5,6	6,3		—	—	N/A
400	1,0	2,0	2,8	4,0	5,0	5,6	6,3	—		—	N/A
400	2,0	4,0	5,6	8,0	10,0	11,2	12,6	—	—		N/A
500	1,3	2,5	3,6	5,0	6,3	7,1	8,0		—	—	N/A
500	1,3	2,5	3,6	5,0	6,3	7,1	8,0	—		—	N/A
500	2,6	5,0	7,2	10,0	12,6	14,2	16,0	—	—		N/A
Supplementary information:											
*) Material group IIIb is allowed if the working voltage does not exceed 50 V											
**) B = Basic insulation, S = Supplementary insulation, R = Reinforced insulation											



29.2	TABLE: Creepage distances, functional insulation							P
Working voltage (V)	Creepage distance (mm) Pollution degree							
	1	2			3			
	Material group				Material group			Verdict / Remark
	I	II	IIIa/IIIb	I	II	IIIa/IIIb <sup>*)</sup>		
≤10	0,08	0,4	0,4	0,4	1,0	1,0	1,0	N/A
50	0,16	0,56	0,8	1,0	1,4	1,6	1,8	N/A
125	0,25	0,71	1,0	1,4	1,8	2,0	2,2	N/A
250	0,42	1,0	1,4	<b>2,0</b>	2,5	2,8	3,2	P
400	0,75	1,6	2,2	3,2	4,0	4,5	5,0	N/A
500	1,0	2,0	2,8	4,0	5,0	5,6	6,3	N/A

Supplementary information:  
<sup>\*)</sup> Material group IIIb is allowed if the working voltage does not exceed 50 V

24.1	TABLE: Critical components information				P
Object / part No.	Manufacturer/ trademark	Type / model	Technical data	Standard	Mark(s) of conformity
Plug	Various	Various	250Vac 13A	BS 1363	VDE
Power Supply Cord	Various	Various	2X0.75mm <sup>2</sup>	AS/NZS 3191	VDE
Knob switch	Various	YX2	10.1(3)A, 250V, T125	IEC 61058-1	CB
Connection wire	Various	SVT 18AWG VW-1	18AWG	EN60355-1	Tested in appliance
Plastics enclosure	Various	Various	PC, V-0, 120°C, minimum thickness 1.5 mm	UL 94	UL



30													<b>TABLE: Resistance to heat and fire</b>
Object/ part No.	Manufactu rer/ trademar k	Type/ model	Ball pressure test °C				Glow wire test (GWT) °C				Verdict		
			75	125	cl. 11 +40	cl. 19 +25	550	650		750		850	
Housing	--	--	--	--	X	--	X	--	--	--	--	--	P
Supplementary information:													
1) Parts of material classified at least HB40 or if relevant HBF 2) Parts of material classified as V-0 or V-1 3) Flame persisting longer than 2 s (= te – ti) need only be reported for unattended appliances 4) Surrounding parts subjected to the needle-flame test of annex E 5) Base material classified as V-0 or if relevant VTM-0 6) The GWIT pre-selection option, the 850 °C GWFI pre-selection option, and the 850 °C GWT are not applicable for attended appliances													



## APPENDIX 1

ATTACHMENT to TRF IEC60335_2_98G			
Clause	Requirement + Test	Result - Remark	Verdict
<b>ATTACHMENT TO TEST REPORT</b> <b>IEC 60335-2-98:2023</b> <b>EUROPEAN GROUP DIFFERENCES AND NATIONAL DIFFERENCES</b> Household and similar electrical appliances – Safety – PART 2-98: Particular requirements for humidifiers			
Differences according to.....: EN 60335 1:2023 + A11:2023			
TRF template used.....: IECEE OD-2020-F2:2022, Ed. 1.2			
Attachment Form No.....: EU_GD_IEC60335_2_98G			
Attachment Originator.....: UL Solutions (Demko)			
Master Attachment.....: 2022-11-18			
Copyright © 2022 IEC System for Conformity Testing and Certification of Electrical Equipment (IECEE), Geneva, Switzerland. All rights reserved.			
<b>CENELEC COMMON MODIFICATIONS (EN)</b>			
7.1	<i>Add a further dashed item:</i> If the appliance is an ultrasonic humidifier or impeller humidifier, it marked with the symbol "Clean the water tank every 3 days" or by similar text. (EN 60335-2-98:2003/A11:2019)		N/A
7.6	Correct symbols used		P
	Symbol for Clean the water tank every three days (EN 60335-2-98:2003/A11:2019)		N/A
	Symbol for filter cleaning/changing (EN 60335-2-98:2003/A11:2019)		N/A



<b>ATTACHMENT</b> to TRF IEC60335_2_98G			
Clause	Requirement + Test	Result - Remark	Verdict
7.12	<p><i>Replace the addition by the following:</i></p> <p>The instructions include details regarding filling, cleaning and descaling.</p> <p>If symbols referred to in 7.1 or 7.6 of this amendment are used, then their meaning explained in the instructions.</p> <p>The instructions state the substance of the following</p>		N/A
	- Be aware that high humidity levels may encourage the growth of biological organisms in the environment. (EN 60335-2-98:2003/A11:2019)		P
	- Do not permit the area around the humidifier to become damp or wet. If dampness occurs, turn the output of the humidifier down. If the humidifier output volume cannot be turned down, use the humidifier intermittently. Do not allow absorbent materials, such as carpeting, curtains, drapes, or tablecloths, to become damp. (EN 60335-2-98:2003/A11:2019)		P
	Unplug the appliance during filling and cleaning. (EN 60335-2-98:2003/A11:2019)		P
	Never leave water in the reservoir when the appliance is not in use. (EN 60335-2-98:2003/A11:2019)		P
	Empty and clean the humidifier before storage. Clean the humidifier before next use. (EN 60335-2-98:2003/A11:2019)		P
	The instructions for ultrasonic humidifiers and impeller humidifiers not provided with specific antibacterial features state the substance of the following:		N/A



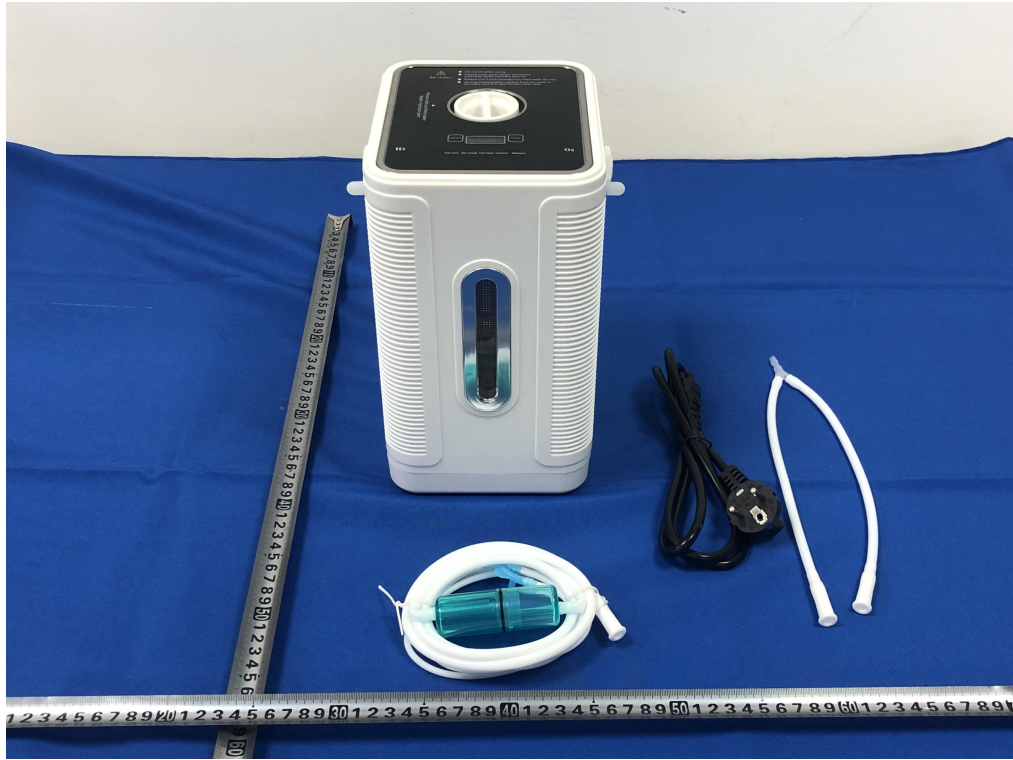
<b>ATTACHMENT to TRF IEC60335_2_98G</b>			
Clause	Requirement + Test	Result - Remark	Verdict
	- Empty the tank and refill every third day. Before refilling, clean it with fresh tap water or cleaning agents if required by the manufacturer. Remove any scale, deposits, or film that has formed on the sides of the tank or on interior surfaces, and wipe all surfaces dry. (EN 60335-2-98:2003/A11:2019)		N/A
	- The instructions for ultrasonic humidifiers and impeller humidifiers provided with specific antibacterial components to be added to the water, state, if relevant, the type or characteristics of the antibacterial component to be used and clarify that these additives added to the water at each refilling. (EN 60335-2-98:2003/A11:2019)		N/A
	The instructions for steam vaporizer humidifier state the substance of the following:		P
	- Keep the appliance out of the reach of children. Steam and boiling water may cause burns. (EN 60335-2-98:2003/A11:2019)		P
	The instructions for electrode-type appliances include the substance of the following:		N/A
	- the composition and quantity of solution to be used and advice not to use an excessive amount of salt; (EN 60335-2-98:2003/A11:2019)		N/A
	- the appliance is not to be operated from a d.c. supply. (EN 60335-2-98:2003/A11:2019)		N/A
7.14	Addition:		N/A
	The height of the symbols "Clean the water tank every three days" and "IEC 60417-5575 (2007-01)" at least 12 mm. (EN 60335-2-98:2003/A11:2019)		N/A
	The height of the text "Clean the water tank every three days" 8 mm measured on the capital letters. (EN 60335-2-98:2003/A11:2019)		N/A
7.15	Addition:		N/A



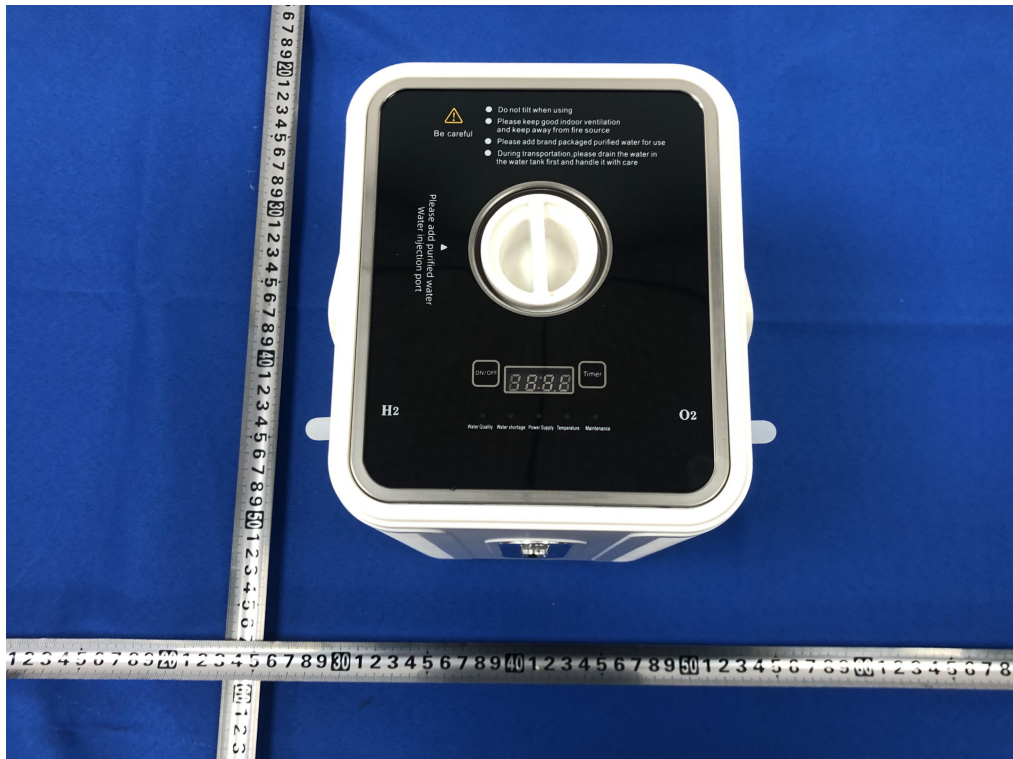


<b>ATTACHMENT</b> to TRF IEC60335_2_98G			
Clause	Requirement + Test	Result - Remark	Verdict
	The symbol or the text for "Clean the water tank every three days" clearly visible from the outside of appliance in normal use. (EN 60335-2-98:2003/A11:2019)		N/A
22	Add the following new subclauses:		N/A
22.Z101	Water reservoirs of ultrasonic or impeller type humidifiers not provided with specific antibacterial features constructed so that every internal surface in touch with water is easily accessible for cleaning.  <i>Inspection is made by using test probe B of EN 61032, which able to access all surfaces and within 3 mm of any corners.</i> (EN 60335-2-98:2003/A11:2019)		N/A
22.Z102	Ultrasonic and impeller humidifiers not provided with specific antibacterial features give an audible and visible indication after a maximum interval of 3 days since last refill and every time when the appliance is energised. The indication remain until action by the user (e.g. cleaning and filling the container with fresh water or resetting the alarm) is taken. (EN 60335-2-98:2003/A11:2019)		N/A
22.Z103	For ultrasonic and impeller humidifiers provided with specific antibacterial features (e.g. by construction, by chemical additives, etc.), the manufacturer deliver a declaration, with supporting documentation, to give evidence of the effectiveness of antibacterial features. (EN 60335-2-98:2003/A11:2019)		N/A
22.Z104	Appliances constructed so that lubricants are prevented from polluting the water in the reservoir. (EN 60335-2-98:2003/A11:2019)		N/A

## APPENDIX 2 (Photos of EUT)



External view(Model: OL-225)



Top view(Model: OL-225)



Side view(Model: OL-225)



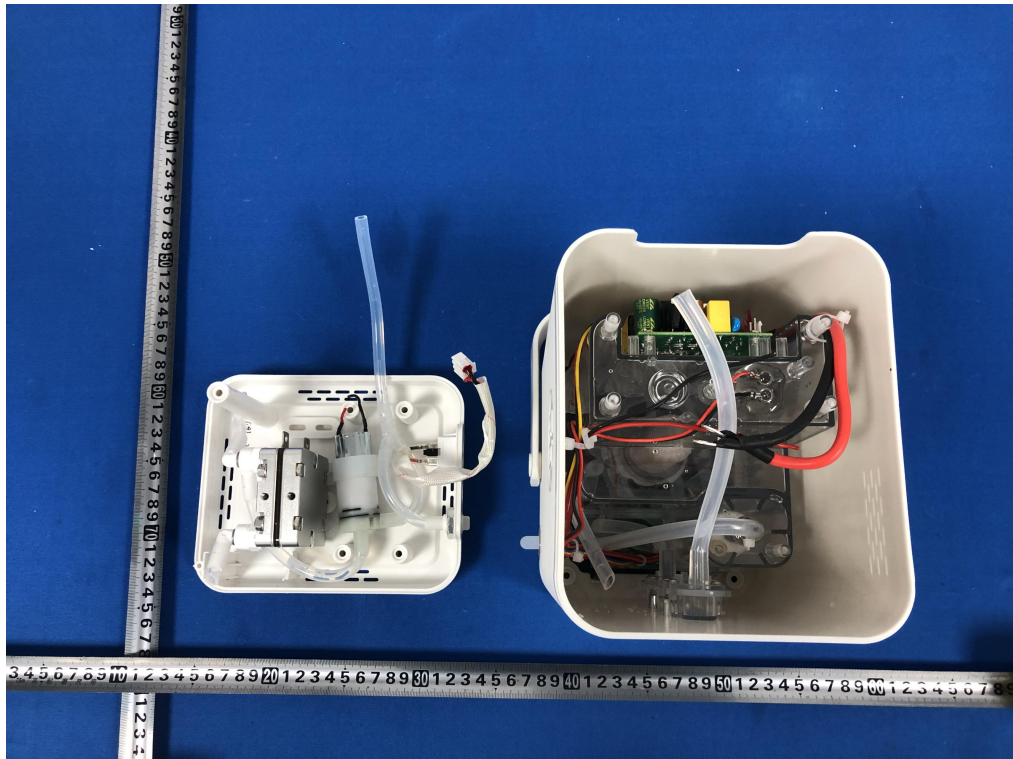
Side view(Model: OL-225)



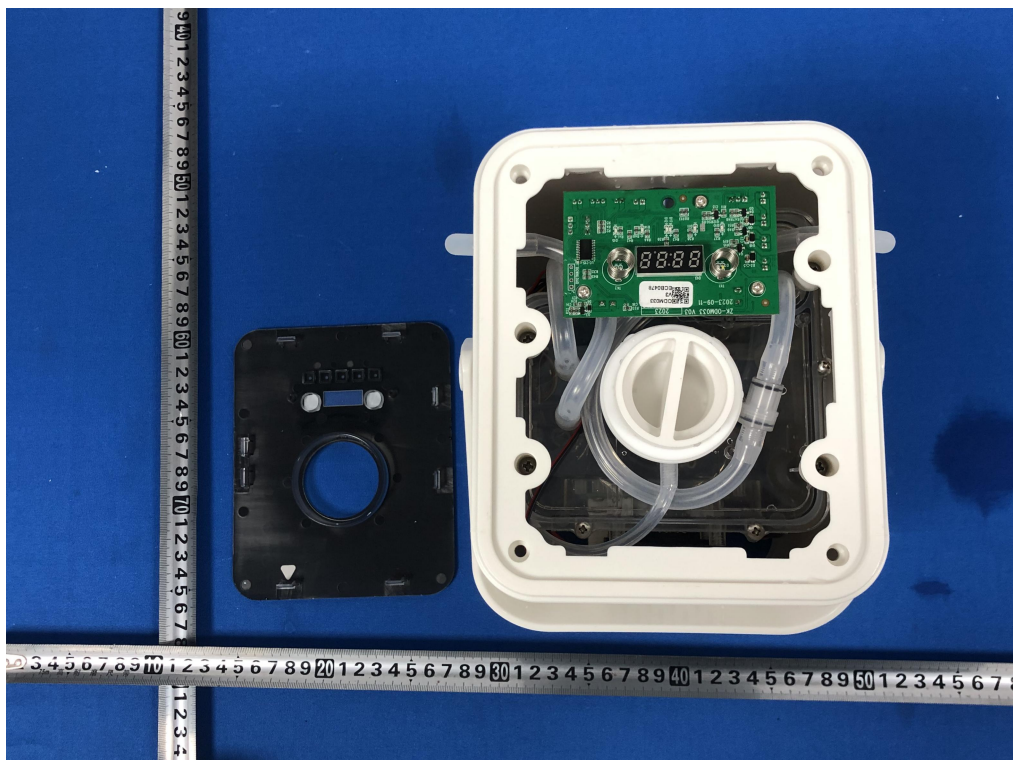
Side view(Model: OL-225)



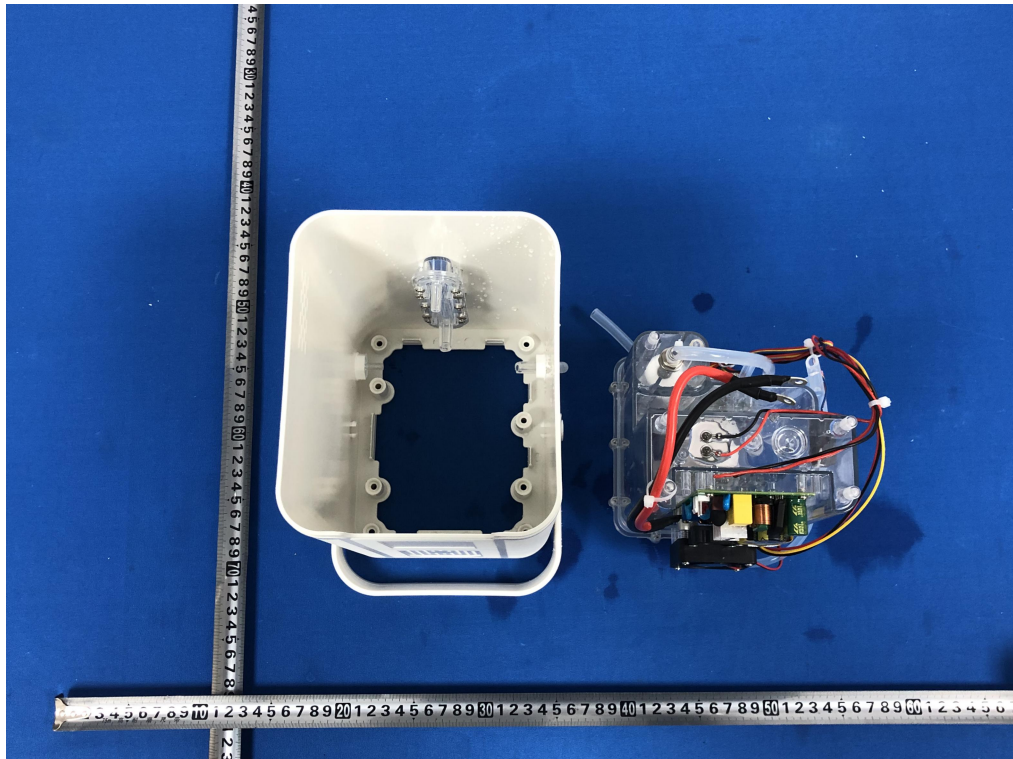
Side view(Model: OL-225)



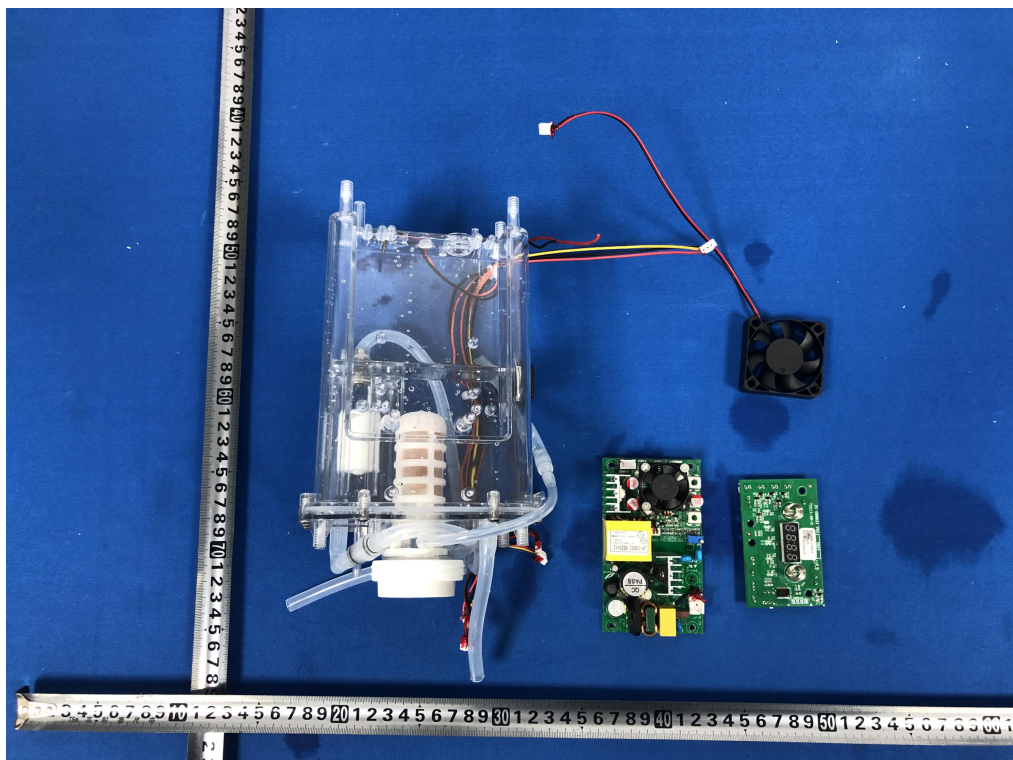
Internal view(Model: OL-225)



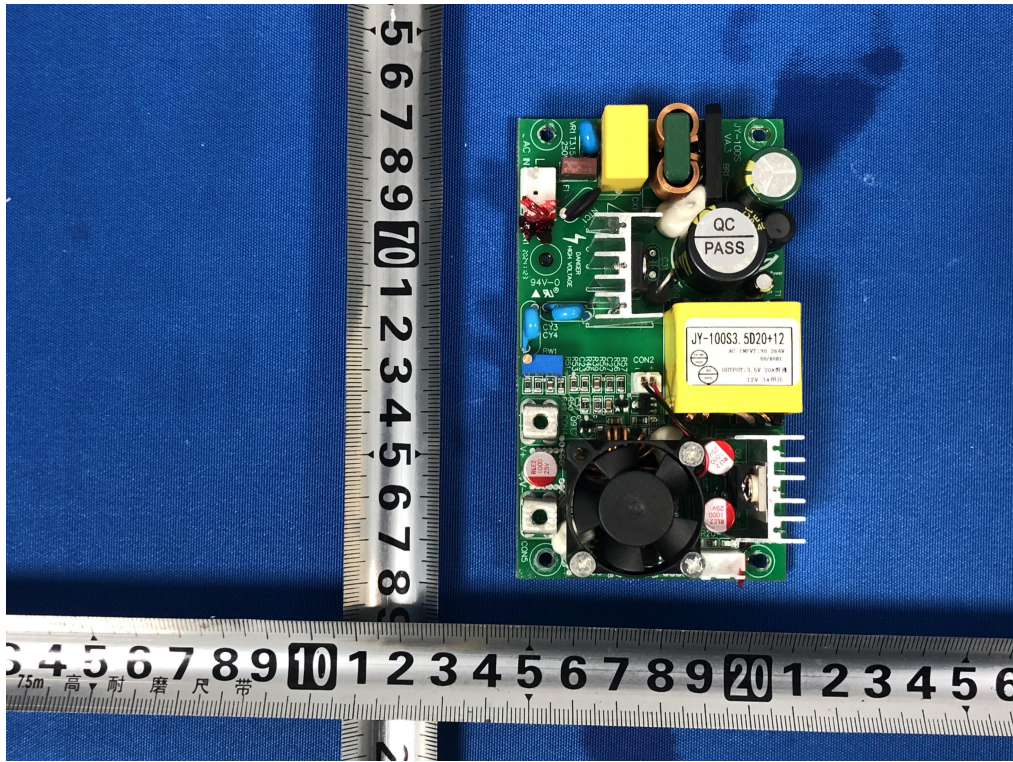
Internal view(Model: OL-225)



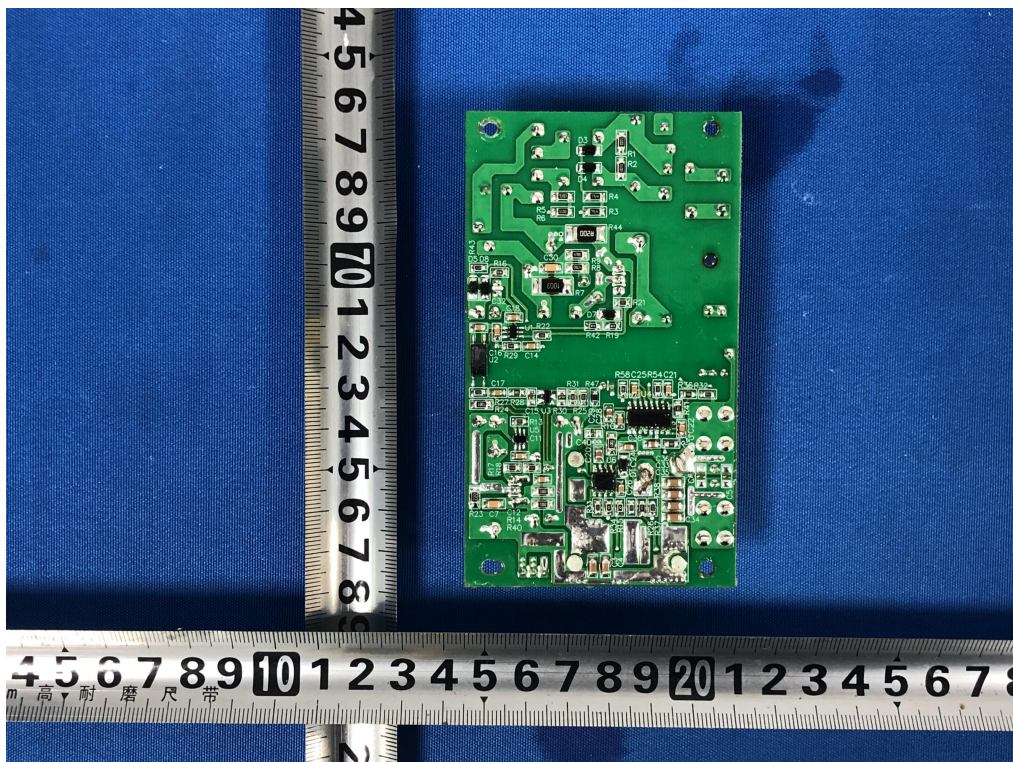
Internal view(Model: OL-225)



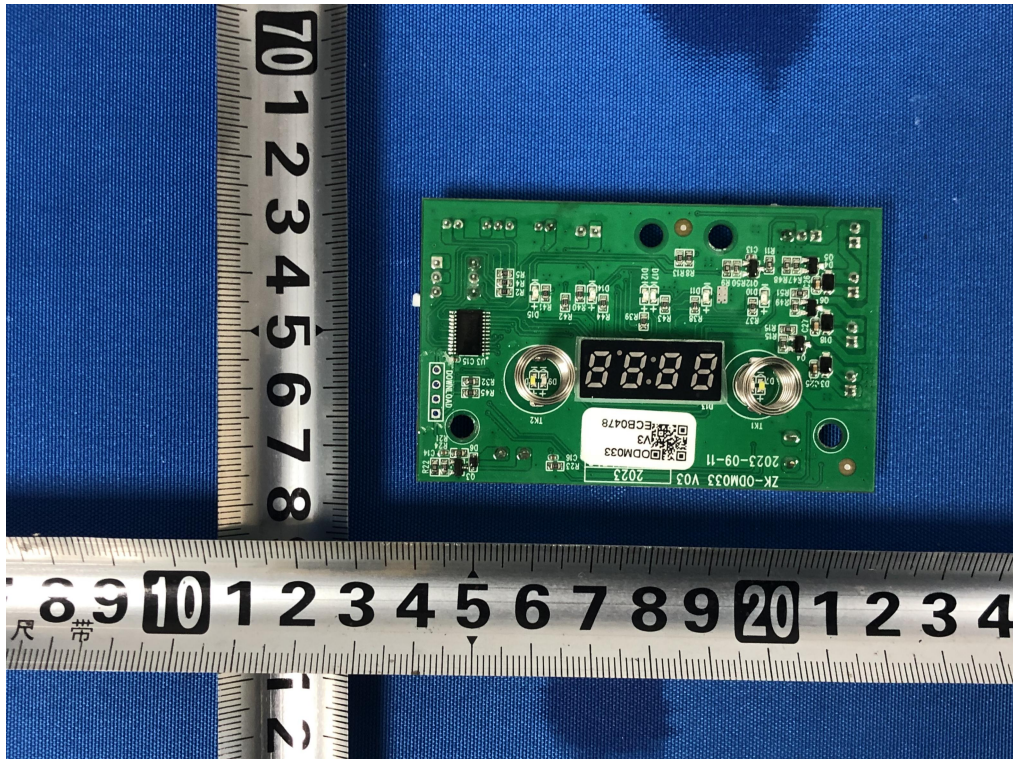
Internal view(Model: OL-225)



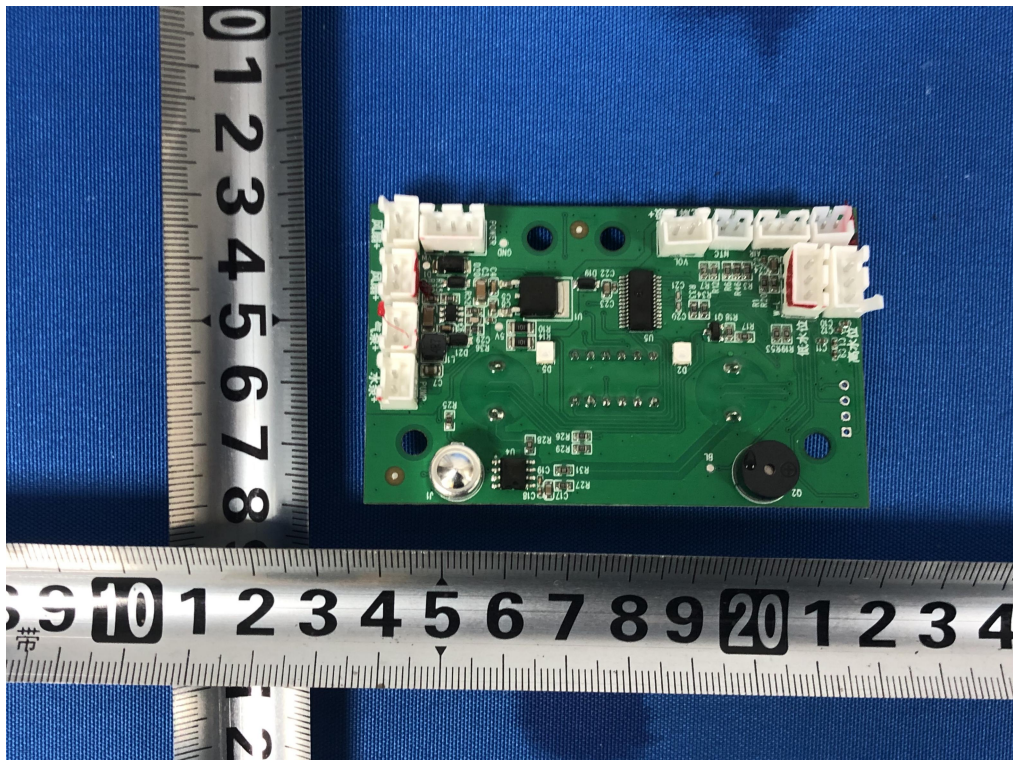
PCB view(Model: OL-225)



PCB view(Model: OL-225)



PCB view(Model: OL-225)



PCB view(Model: OL-225)

===End of Report ===